

# Kasserte fritidsbåter

Kapittel 2 i avfallsforskriften

# Hvorfor?

- Beskytte ytre miljø
- Økt materialgjenvinning og gjenvinning generelt

# Hva?

- Kapittel 2 i avfallsforskriften gjelder for båter opp til 15 fot uten innenbordsmotor
- Kommunen skal sørge for gratis mottak
- Miljødirektoratet utbetaler 1000 kr per båt som leveres

# Større båter

- Hvis avfallsmottaket ønsker å ta imot større båter (opp til 49 fot, med innenbordsmotor) må de søke om tillatelse fra Fylkesmannen og forhåndsgodkjenning fra Miljødirektoratet (for å få refundert penger)
- Krav til miljøsanering

# Status hos FMNO

- Søknad fra 2 IKSer og 1 privat avfallsselskap
- Aksepterer litt forenklet søknad fra etablerte selskaper
- Kun på høring hos kommunen
- Gir egen tillatelse (kan også oppdatere vilkår i eksisterende tillatelse)
- Basert på vanlig mal/mal for biloppsamling

# Discarded boats

Regulations relating to the recycling of waste (Waste regulations)

chapter 2

# Purpose of the regulation

- Protect the external environment
- Increase material recycling of discarded boats

- Boats smaller than 15 feet (4,572 m)
- The municipalities will make sure that boats can be delivered, free of charge, to a reception facility.
- The Norwegian Environment Agency will pay you 1000 NOK when you deliver your boat.



# What about bigger boats?

- The reception facilities (i.e inter-municipial waste companies, private waste companies) need to apply for a permit from the County Governor and approval from the Norwegian Environment Agency (to get reimbursed)
- Requirements relating to treatment operations for depollution

# Status in Nordland

- Two inter-municipal waste companies and one private waste company has applied for a permit



Fylkesmannen i  
NORDLAND

# Littering from blasting

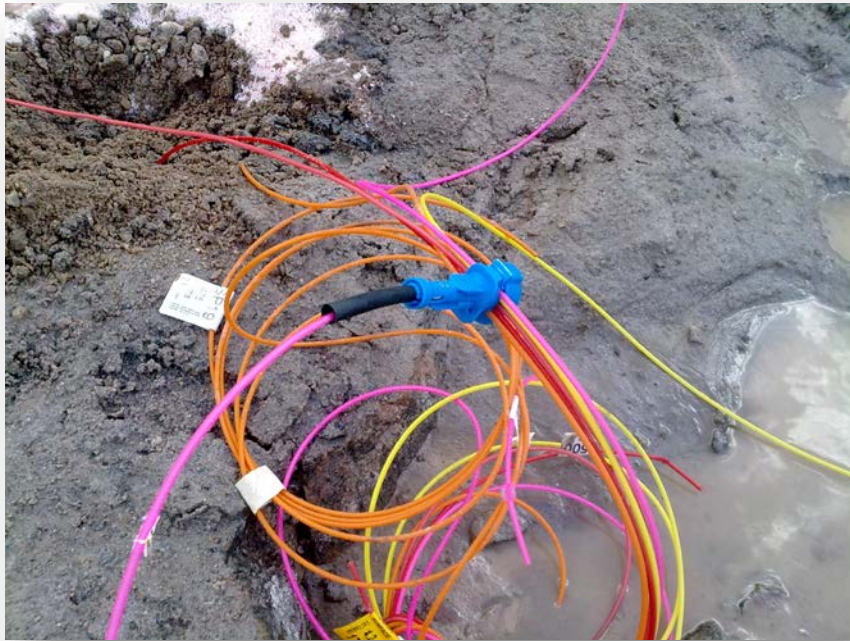


# What it used to look like



# What it looks like now

- Nonel/Detonel shock tube detonators



# Reclaiming land with reclaimed stone...



# This happens...



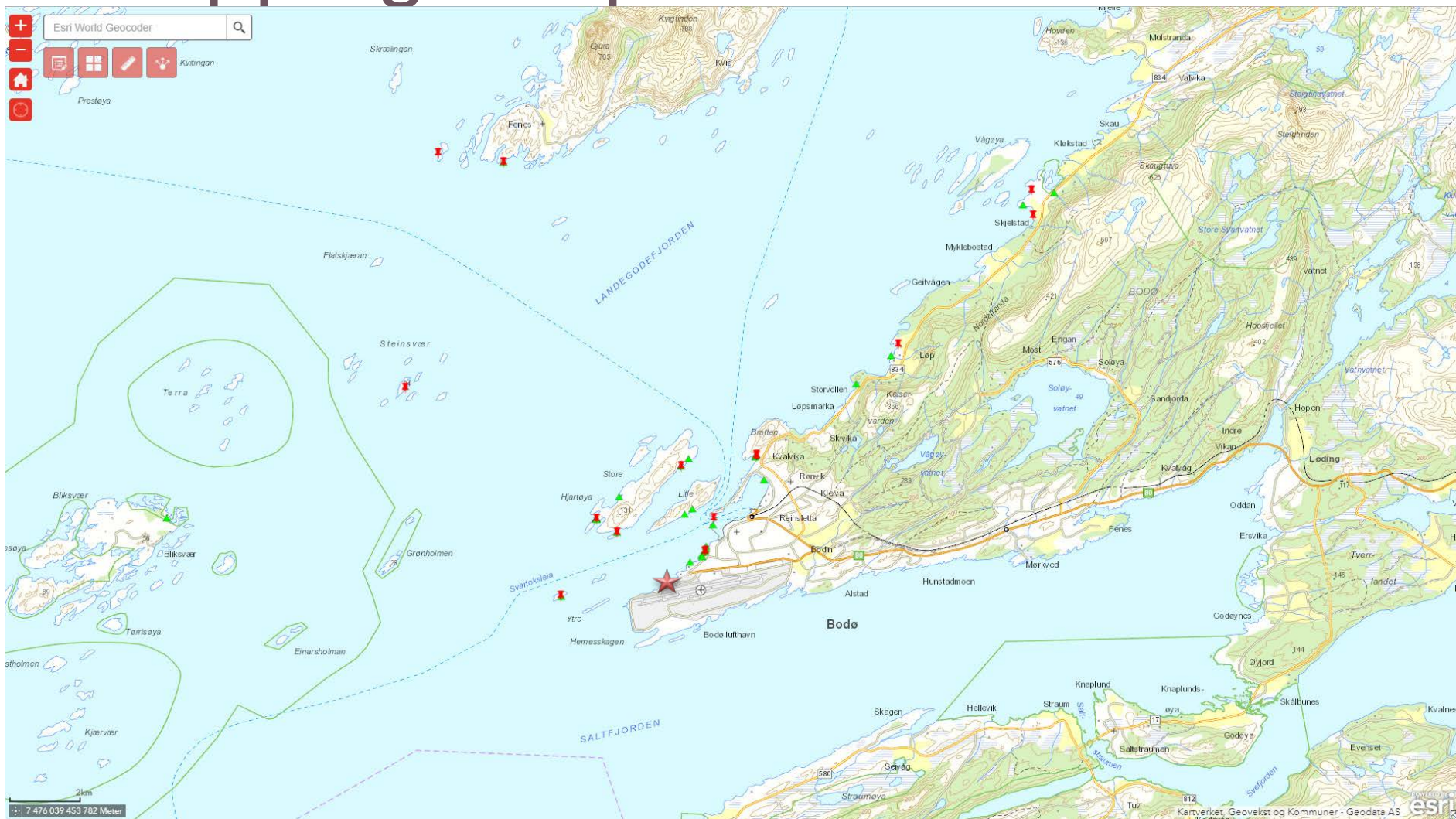
- numerous reports in social media of mysterious plastic tubes on local beaches
- until one kayaker recognized what it was
- made it obvious who the culprits were

# Inspecting the site





# Mapping the problem



# Reinforced concrete



- contains fibers made of
  - plastic
  - steel
  - glassfiber
  - basalt
  - natural fibers

# Challenge

- How to formulate conditions in permits?
  - tunnels
  - land reclaiming
  - underwater deposits
- Is it possible to prevent?
- Pollution control authorities have to set terms to make change