






# Øyvassheia naturreservat

Åmli kommune, Aust-Agder

-  Grense for verneområde
-  Skogsbilveg
-  Sti/Skiløype, jf. verneforskrift
-  Traktorslepe, jf. verneforskrift
-  Hytte/Støyl

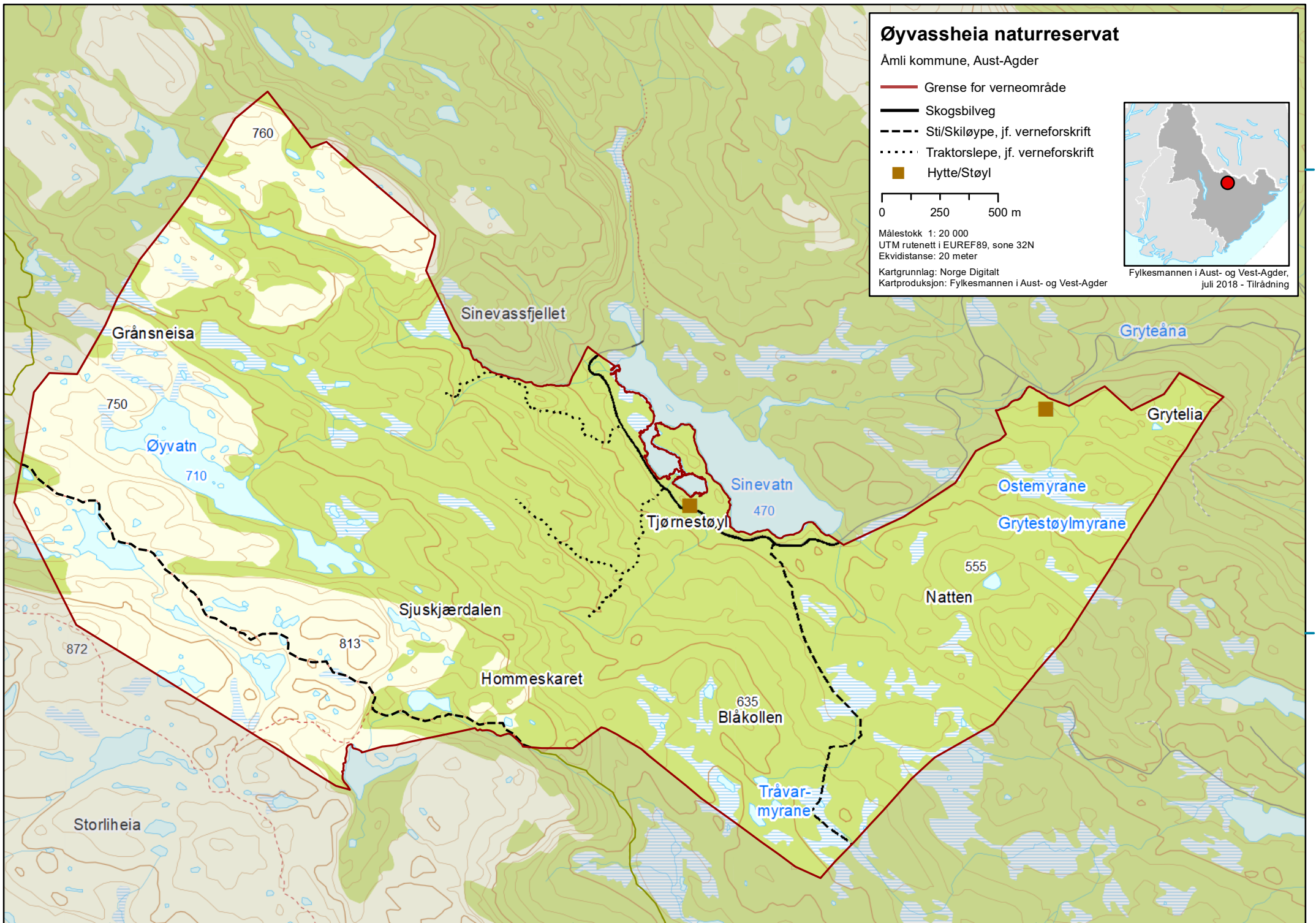
0 250 500 m

Målestokk 1: 20 000  
UTM rutenett i EUREF89, sone 32N  
Ekvidistans: 20 meter

Kartgrunnlag: Norge Digitalt  
Kartproduksjon: Fylkesmannen i Aust- og Vest-Agder



Fylkesmannen i Aust- og Vest-Agder,  
juli 2018 - Tilrådning



454000

456000

458000

6524000

6522000