

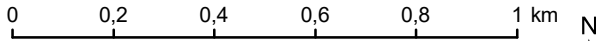
Kart til oppstart

# Sandbu naturreservat

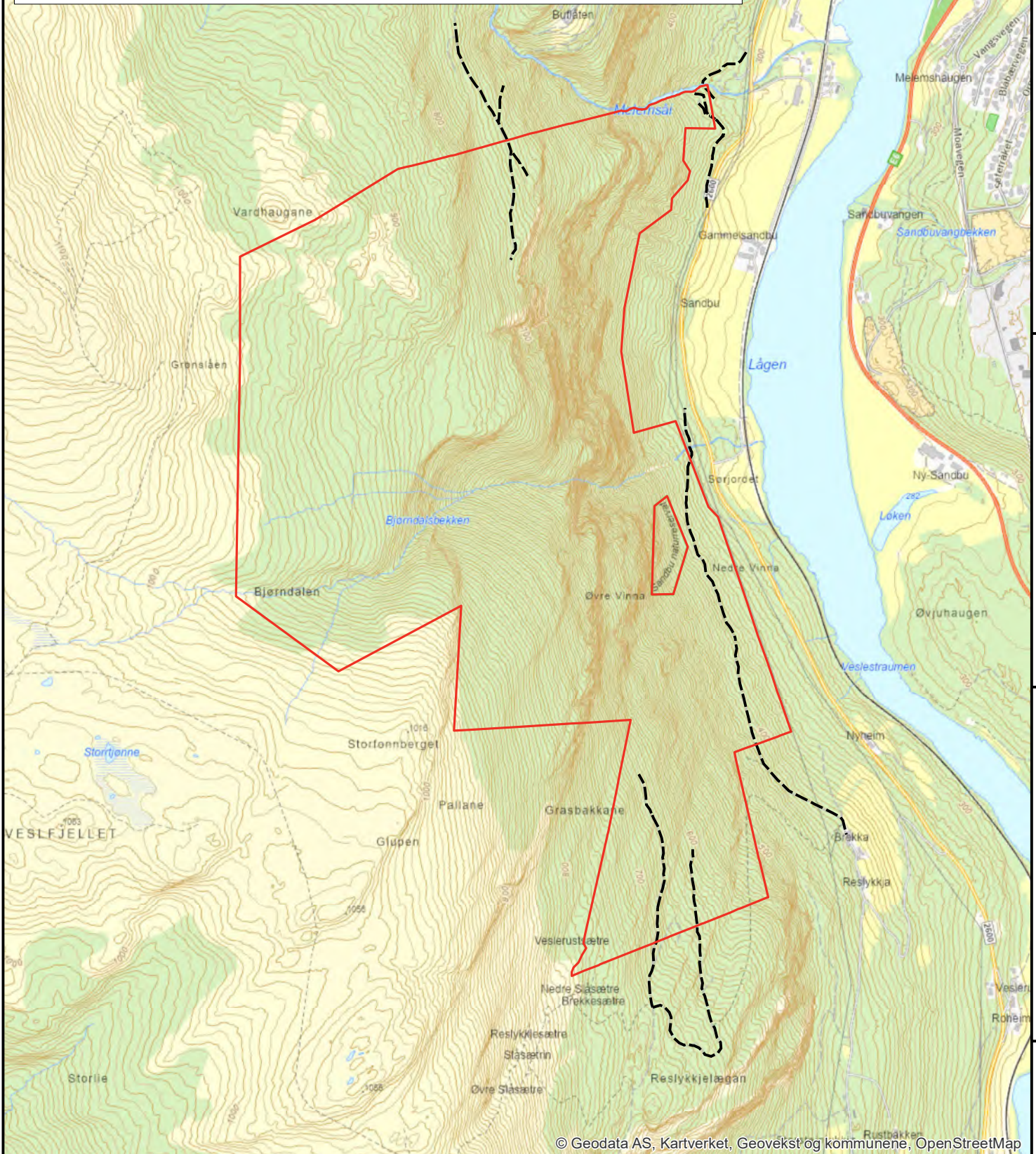
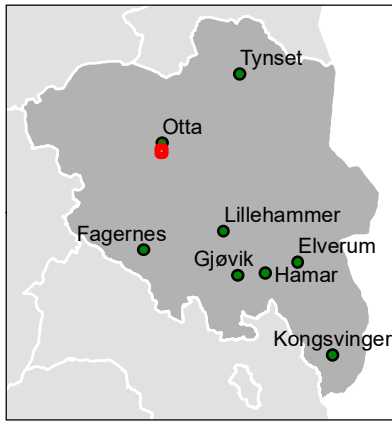
Sel kommune, Innlandet

- Grense for foreslått naturreservat
- - - Traktorveg, jf. verneforskrift

Målestokk: 1:15 000 i A4



© Kartverket  
Statsforvalteren i Innlandet, desember 2023






6 843 000  
6 843 000  
6 842 000  
6 841 000

Kart til oppstart for utvidelse av

# Vinstradalen naturreservat

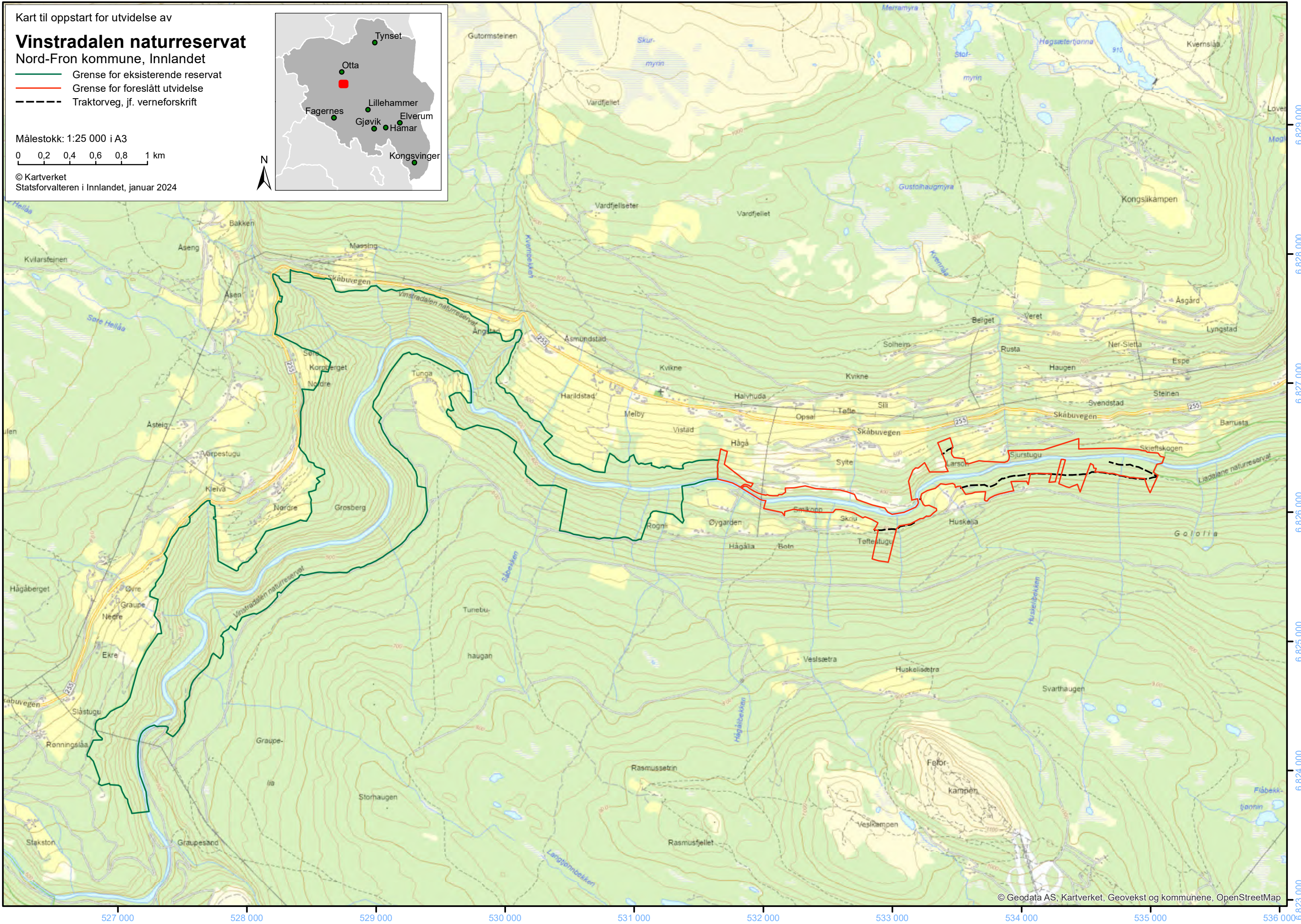
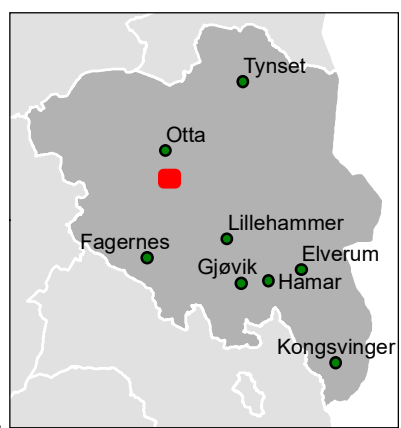
Nord-Fron kommune, Innlandet

-  Grense for eksisterende reservat
-  Grense for foreslått utvidelse
-  Traktorveg, jf. verneforskrift

Målestokk: 1:25 000 i A3

0 0,2 0,4 0,6 0,8 1 km




© Kartverket  
Statsforvalteren i Innlandet, januar 2024



Kart til oppstart for utvidelse av

# Heggshuselva naturreservat

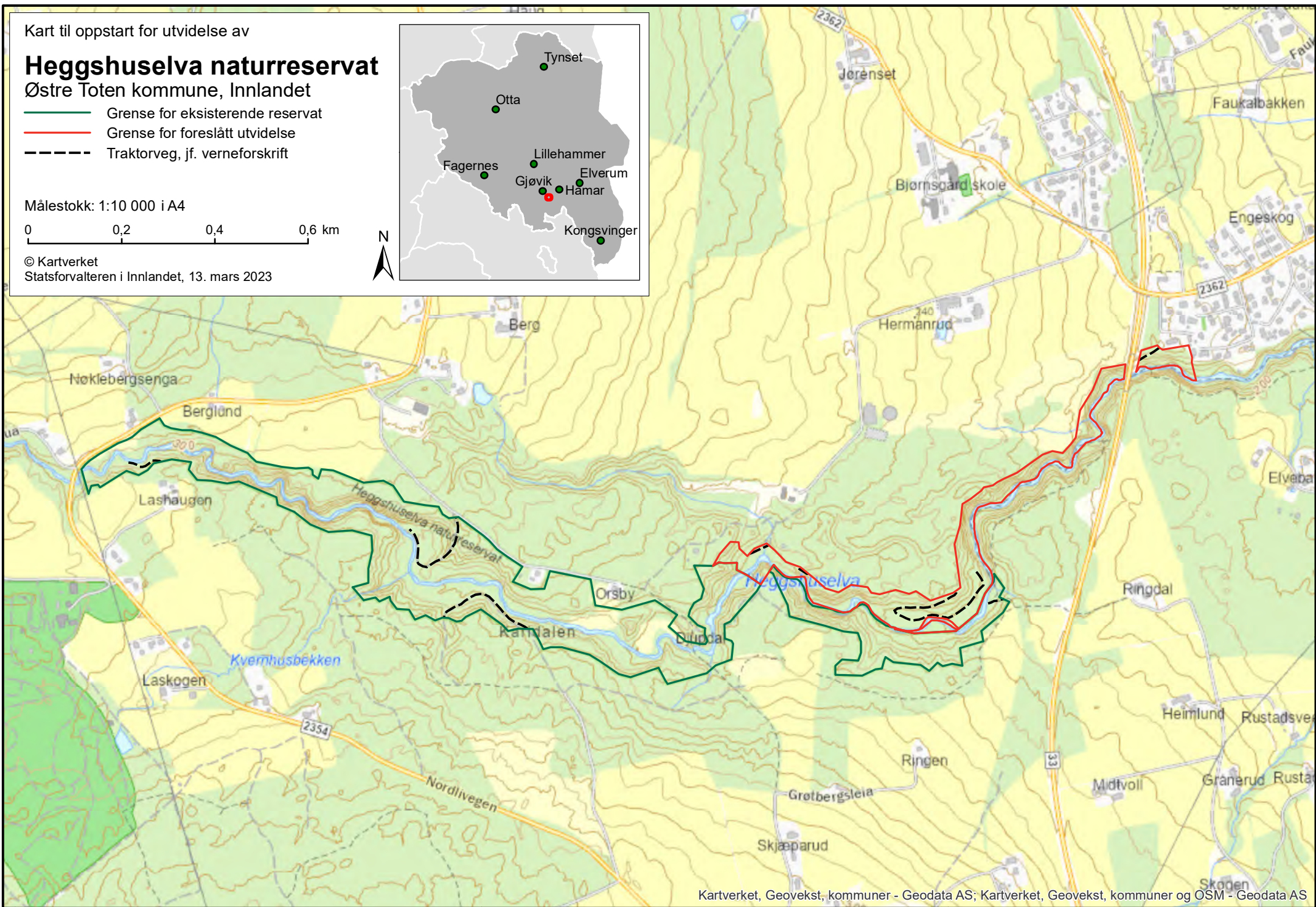
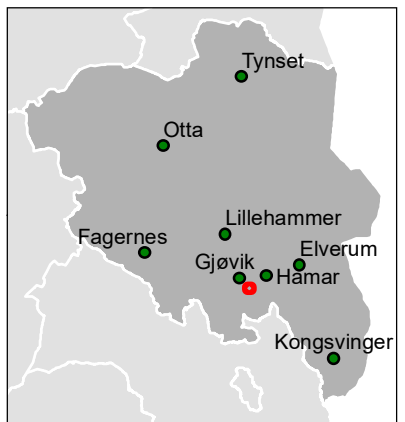
Østre Toten kommune, Innlandet

-  Grense for eksisterende reservat
-  Grense for foreslått utvidelse
-  Traktorveg, jf. verneforskrift

Målestokk: 1:10 000 i A4

0 0,2 0,4 0,6 km



© Kartverket  
Statsforvalteren i Innlandet, 13. mars 2023



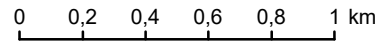
Kart til oppstart for utvidelse av

# Sjoa naturreservat

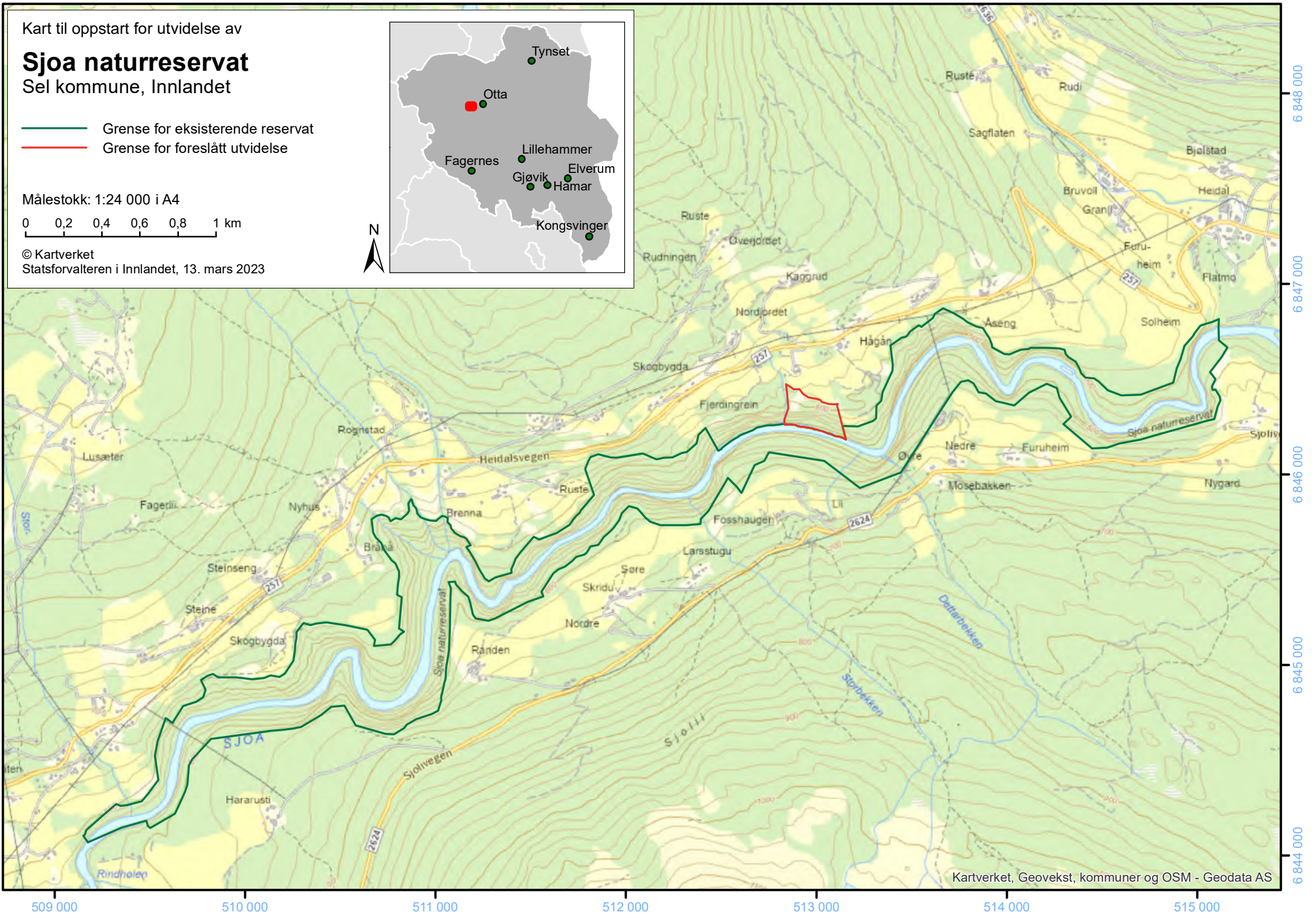
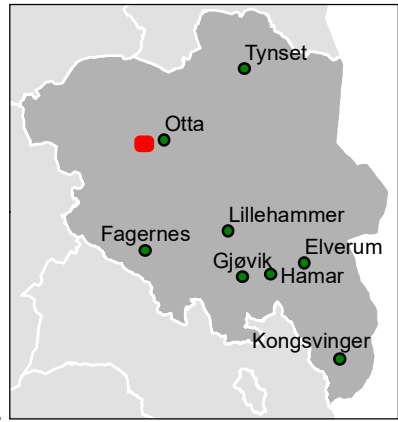
Sel kommune, Innlandet

-  Grense for eksisterende reservat
-  Grense for foreslått utvidelse

Målestokk: 1:24 000 i A4










© Kartverket  
Statsforvalteren i Innlandet, 13. mars 2023



Kart til oppstart for utvidelse av

# Gitvola og Nordre Kletten naturreservat

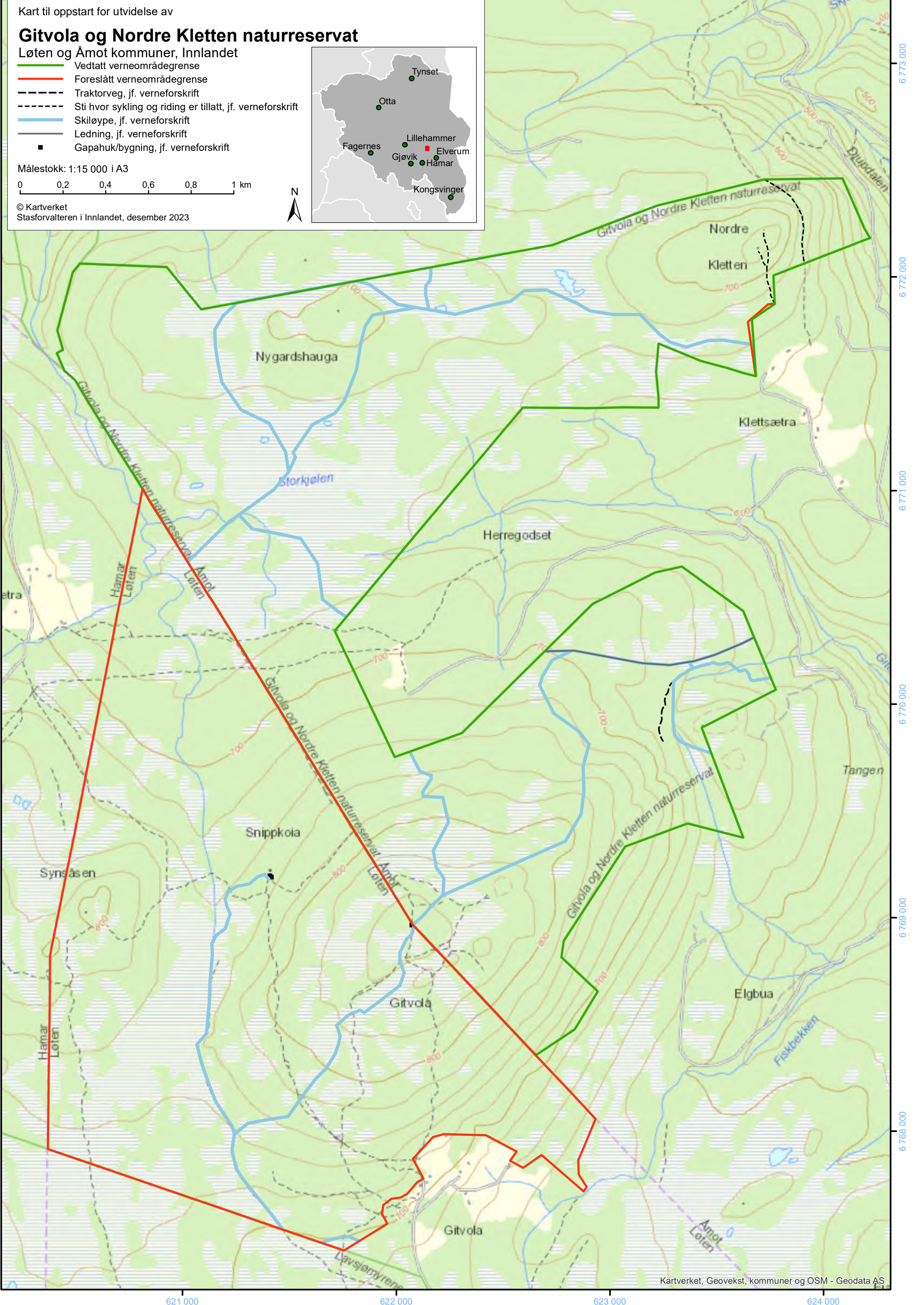
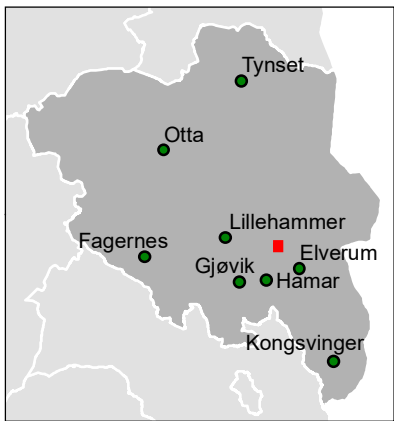
Løten og Åmot kommuner, Innlandet

-  Vedtatt verneområdegrense
-  Foreslått verneområdegrense
-  Traktorveg, jf. verneforskrift
-  Sti hvor sykling og ridning er tillatt, jf. verneforskrift
-  Skiløype, jf. verneforskrift
-  Ledning, jf. verneforskrift
-  Gapahuk/bygning, jf. verneforskrift

Målestokk: 1:15 000 i A3



© Kartverket  
Stasforvalteren i Innlandet, desember 2023



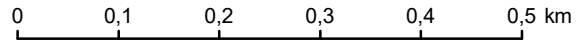
Kart til oppstart for utvidelse av

# Korpreiret naturreservat

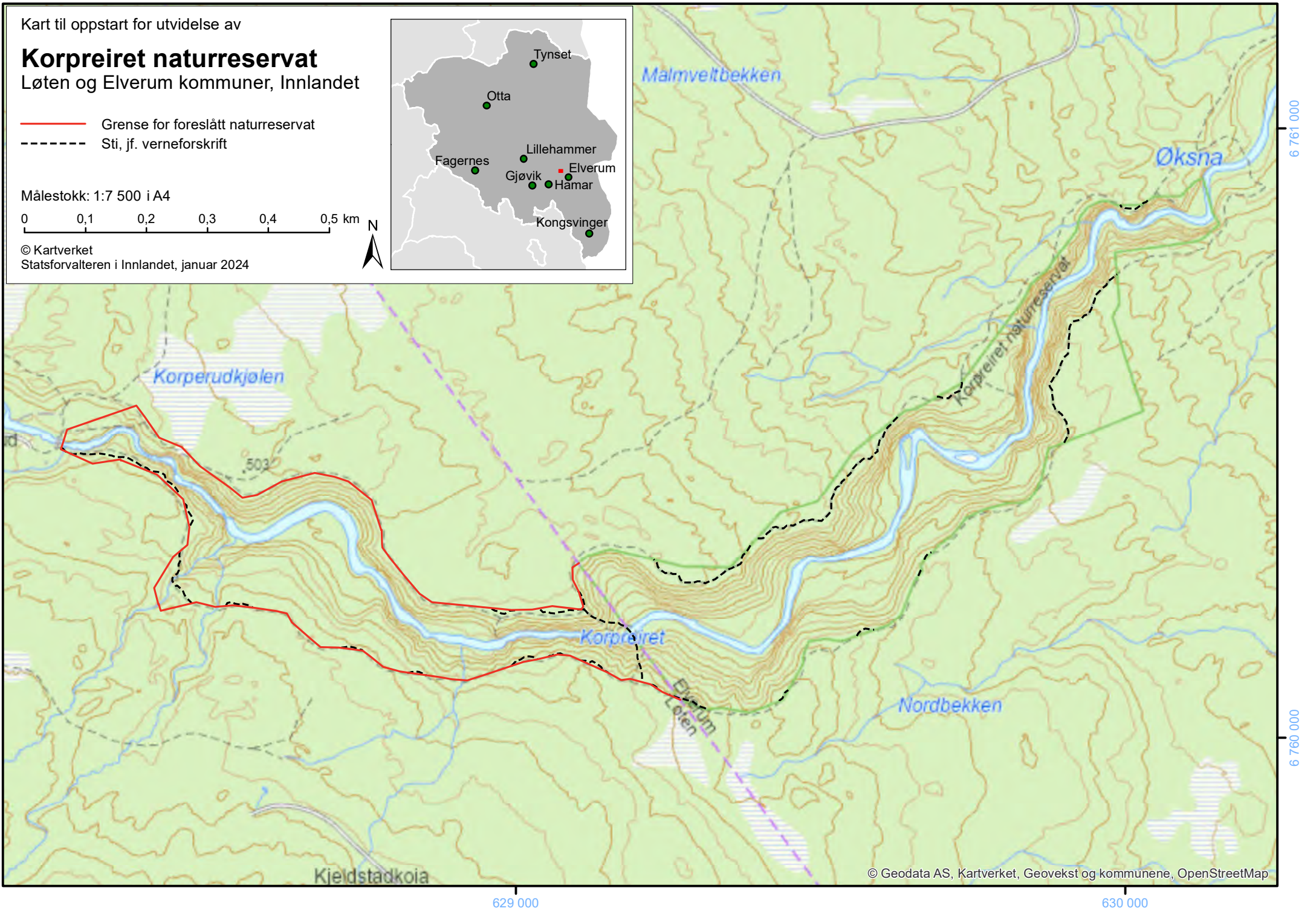
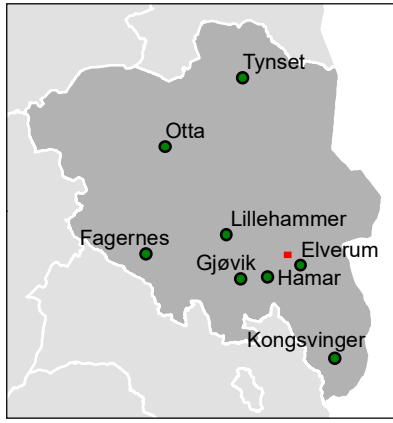
Løten og Elverum kommuner, Innlandet

- Grense for foreslått naturreservat
- - - - - Sti, jf. verneforskrift

Målestokk: 1:7 500 i A4



© Kartverket  
Statsforvalteren i Innlandet, januar 2024



Kart til oppstart for utvidelse av

# Sulustaddalen naturreservat

Østre Toten kommune, Innlandet

- Grense for foreslått naturreservat
- Trasé for tømmertransport, jf. verneforskrift
- - - Traktorveg, jf. verneforskrift

Målestokk: 1:12 000 i A3

