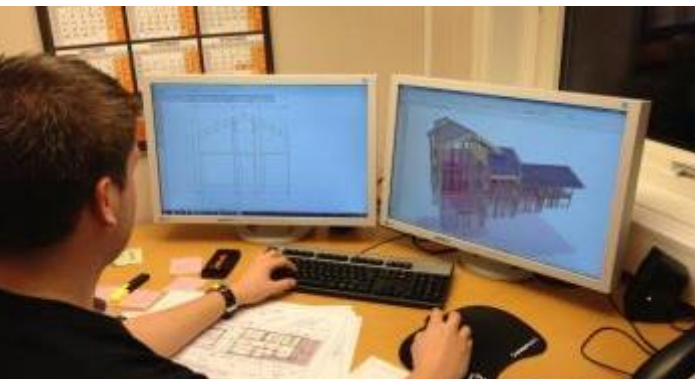


Jatak[®]



JÆREN TRETEKNIKK AS



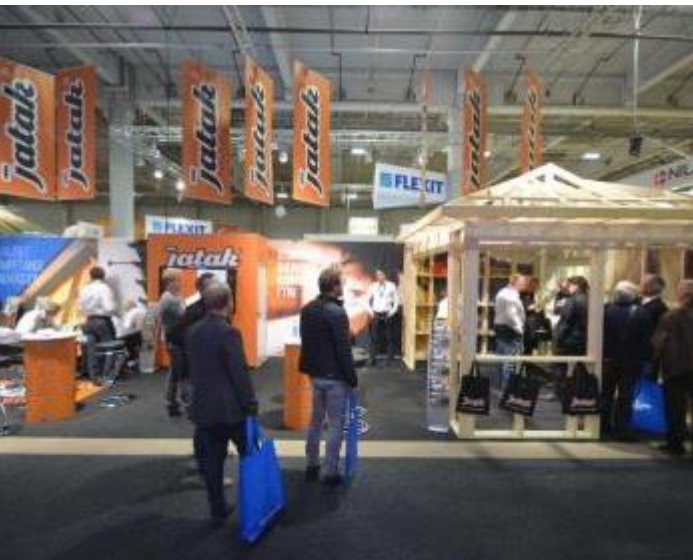


KOMPETANSE – KVALITET - INNOVASJON

Historikk

- Etablert i 2003
- Ble en del av Jatak Gruppen i 2007 (eierpost 20 %)
- Kjøpte Atricon as i 2009 (ing. kontor)
- Etablert ingeniørkontor i Polen i Januar 2015
- Etablerte Jatak Ryfylke as i mai 2015

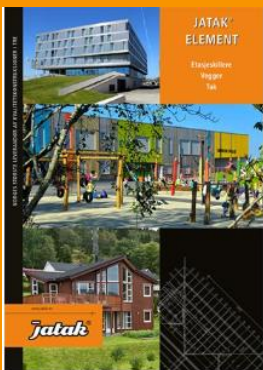
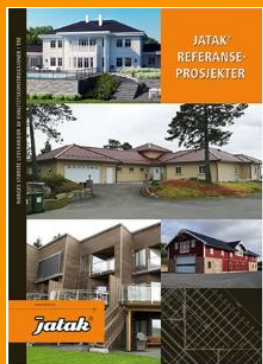




KOMPETANSE – KVALITET - INNOVASJON

2018, status

- Omsetning 2017 – 56.mill
- Budsjett 2018 – 60.mill
- 26 ansatte
 - 2 stk. Administrasjon
 - 3 stk. Salg/marked
 - 2 stk. Tekniske Tjenester
 - 8 stk. Konstruksjonsavd. (4. stk i Polen)
 - 11 stk. Produksjon
- Elementproduksjon, Jatak Ryfylke



Produkter

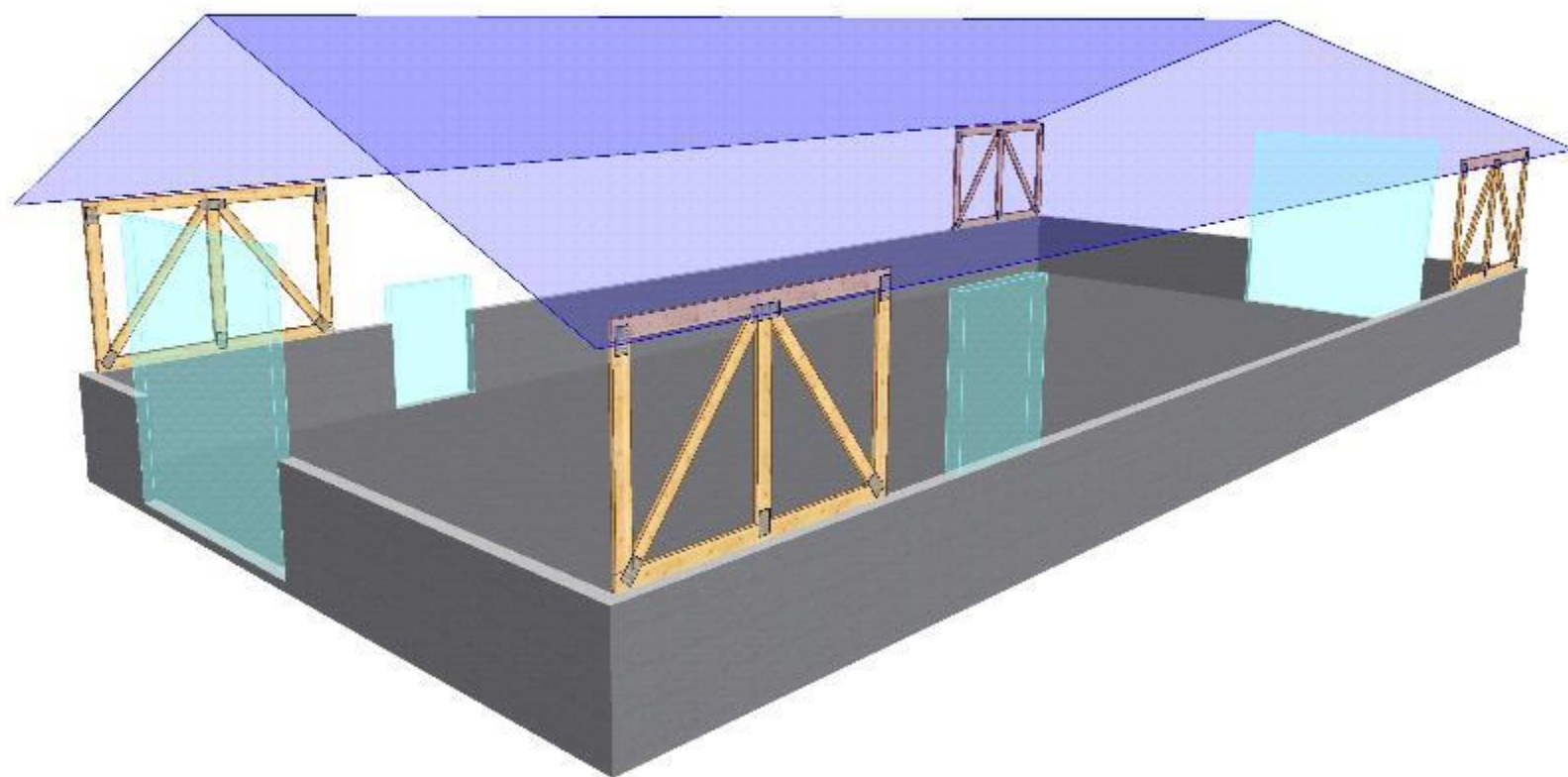
- Takstol, markedsleder vår region
- Hulldekke i tre
- Konstruksjonspakker (Precut)
- Element
 - Gulv
 - Vegg
 - Tak

Bruksområder

- Enebolig
- Leilighet
- Hytte
- Landbruk/lager
- Forretningsbygg
- Bru, tunnel, vei

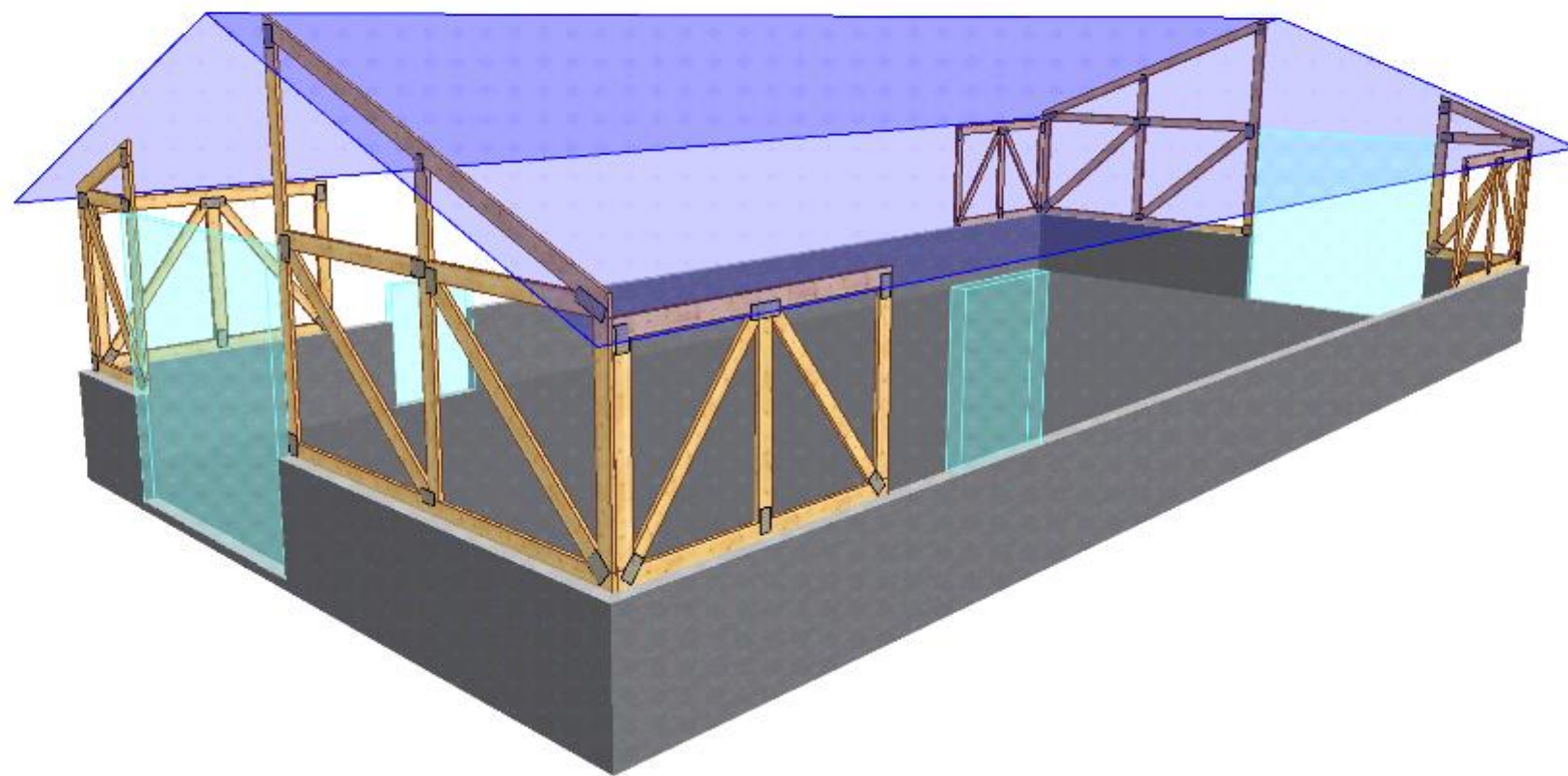
Jatak[®]

NARVEBYGGET



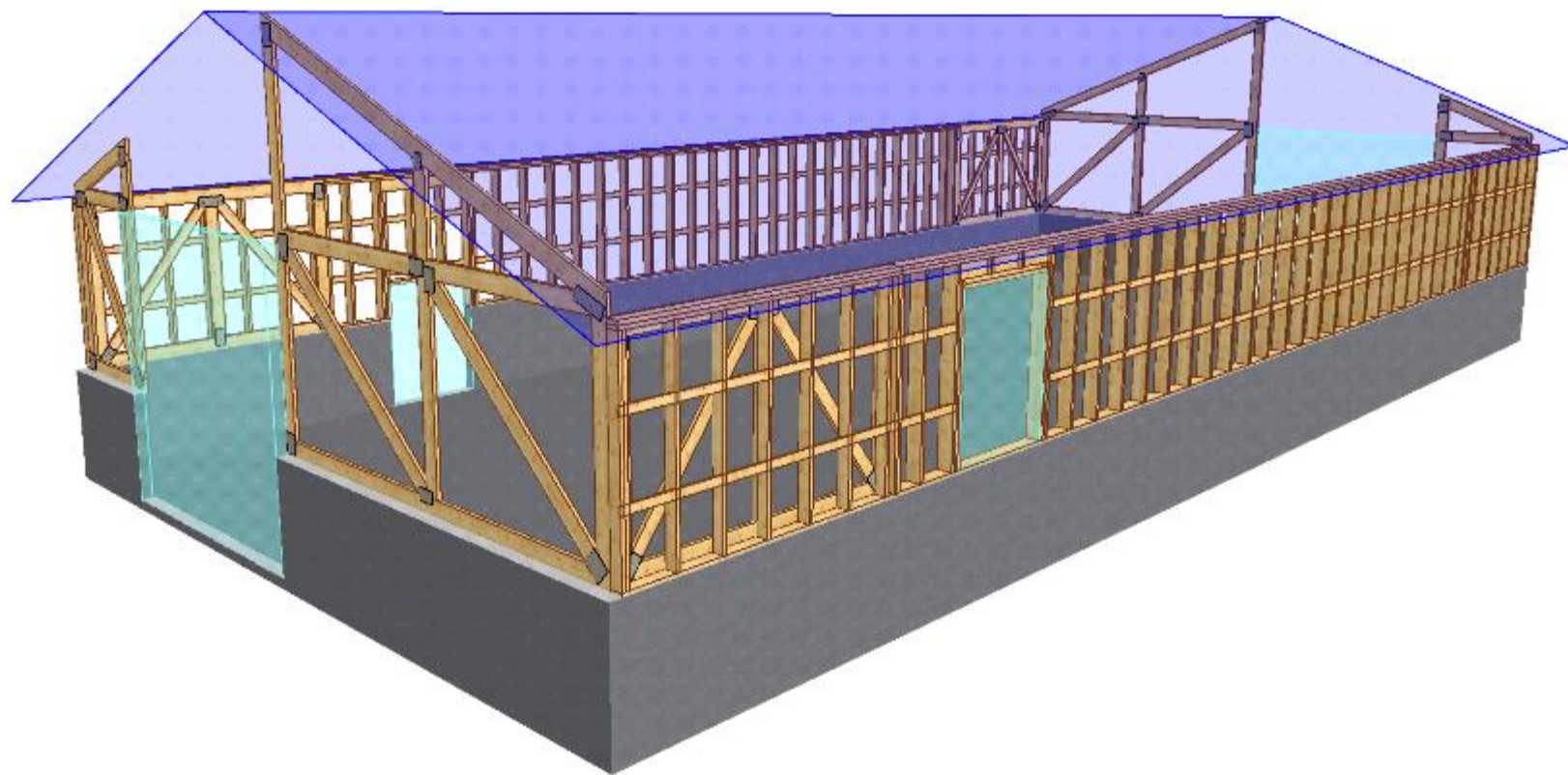
Jatak[®]

NARVEBYGGET



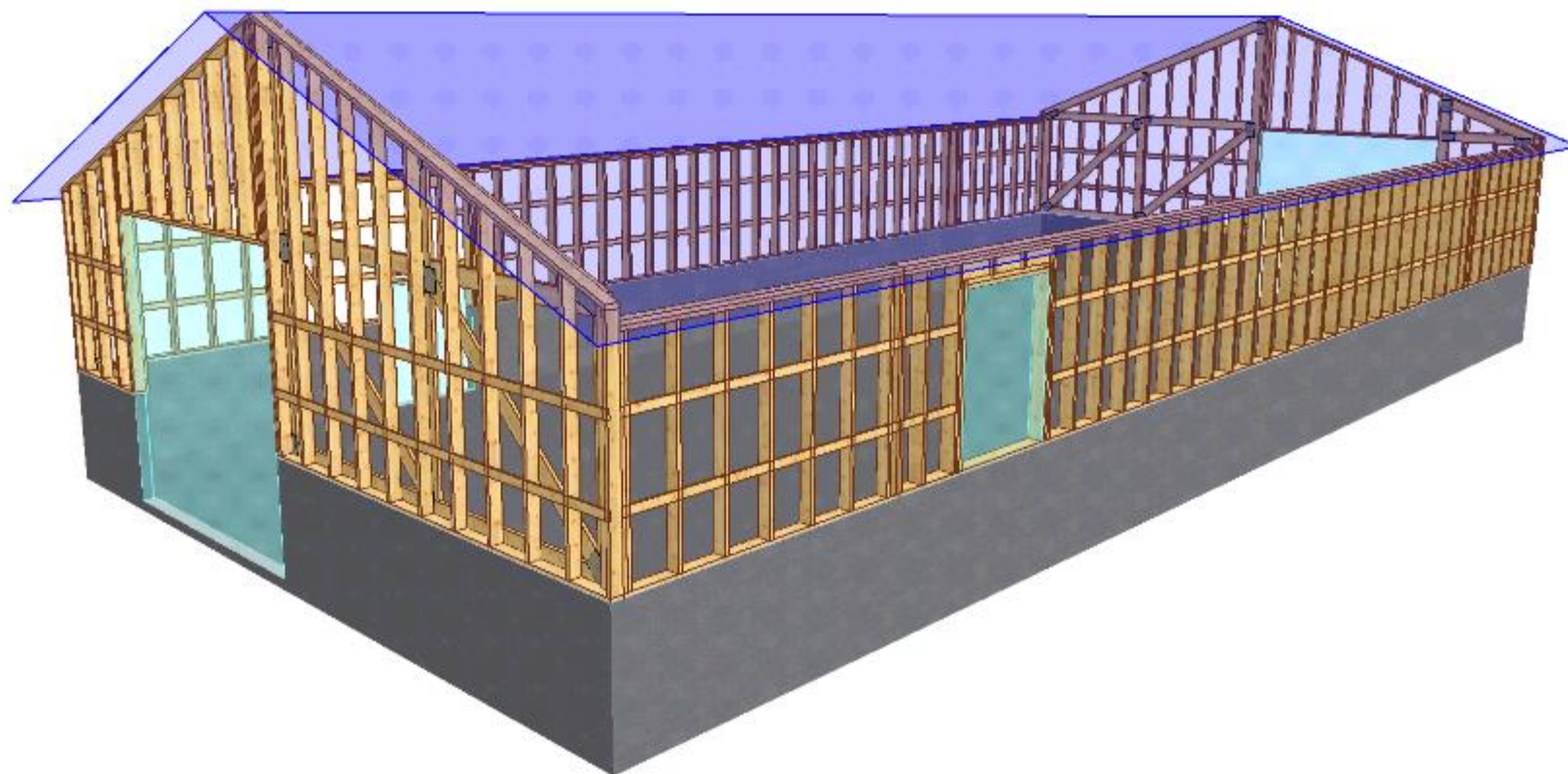
Jatak[®]

NARVEBYGGET



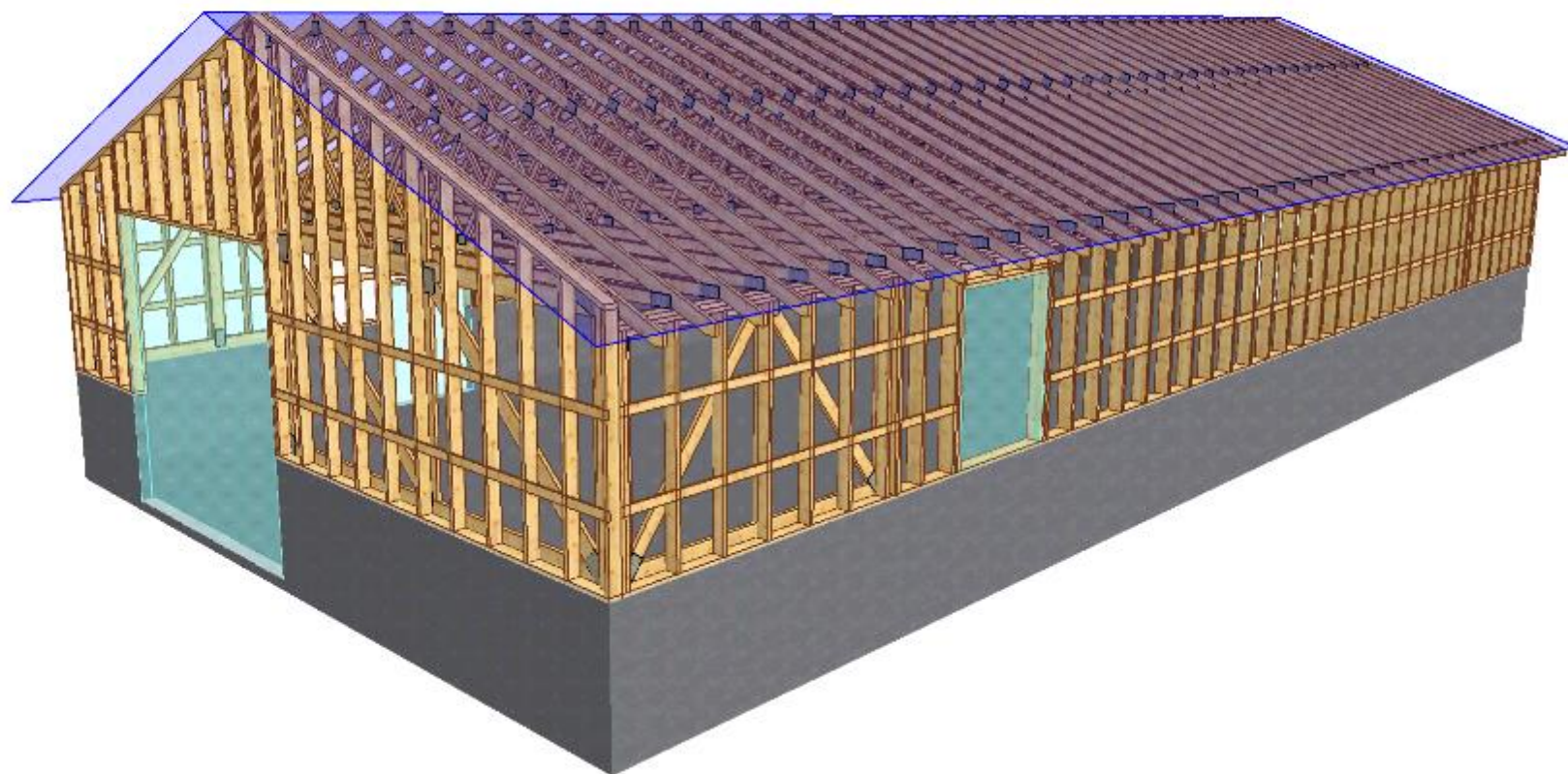
Jatak[®]

NARVEBYGGET



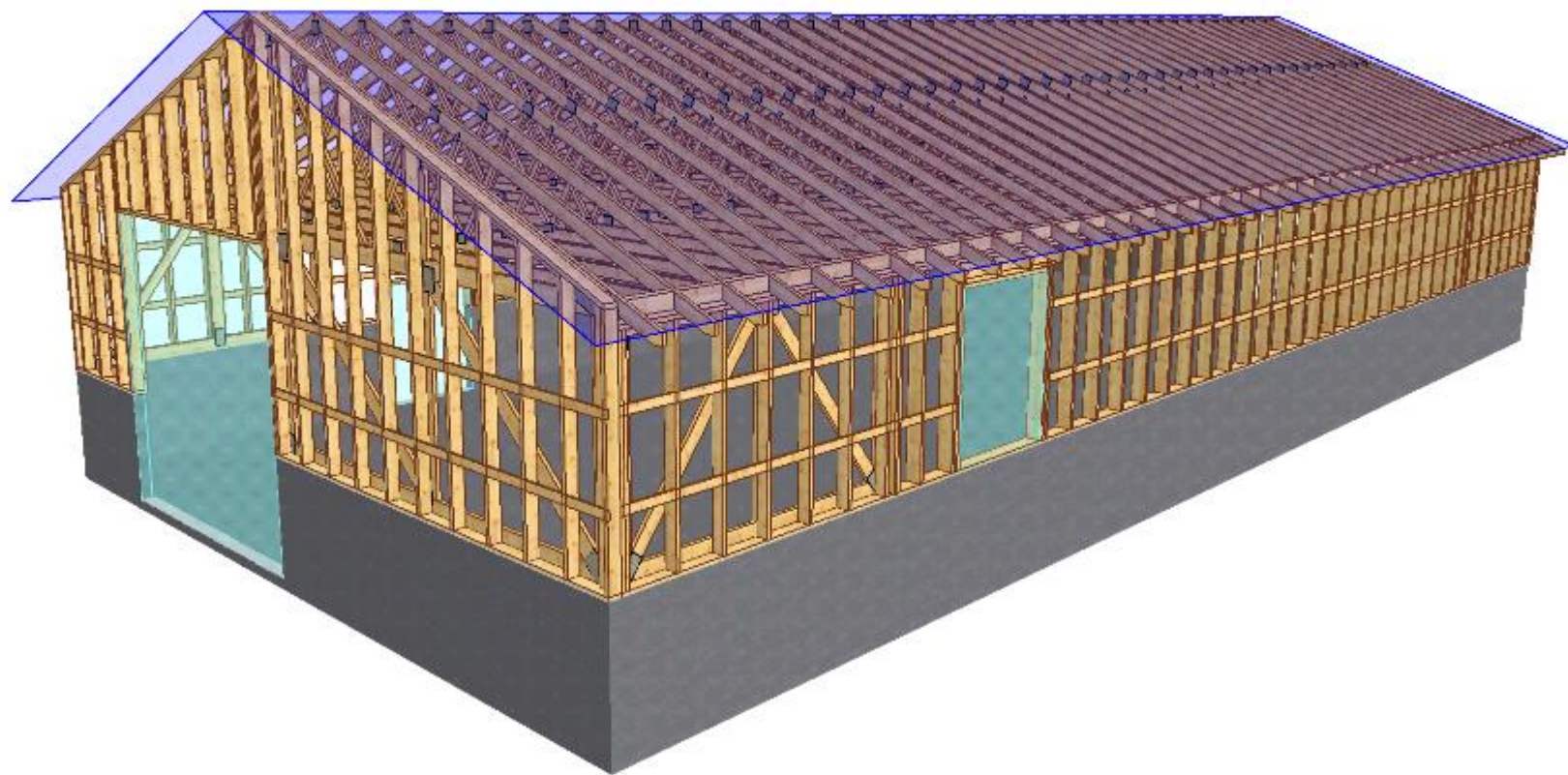
Jatak[®]

NARVEBYGGET



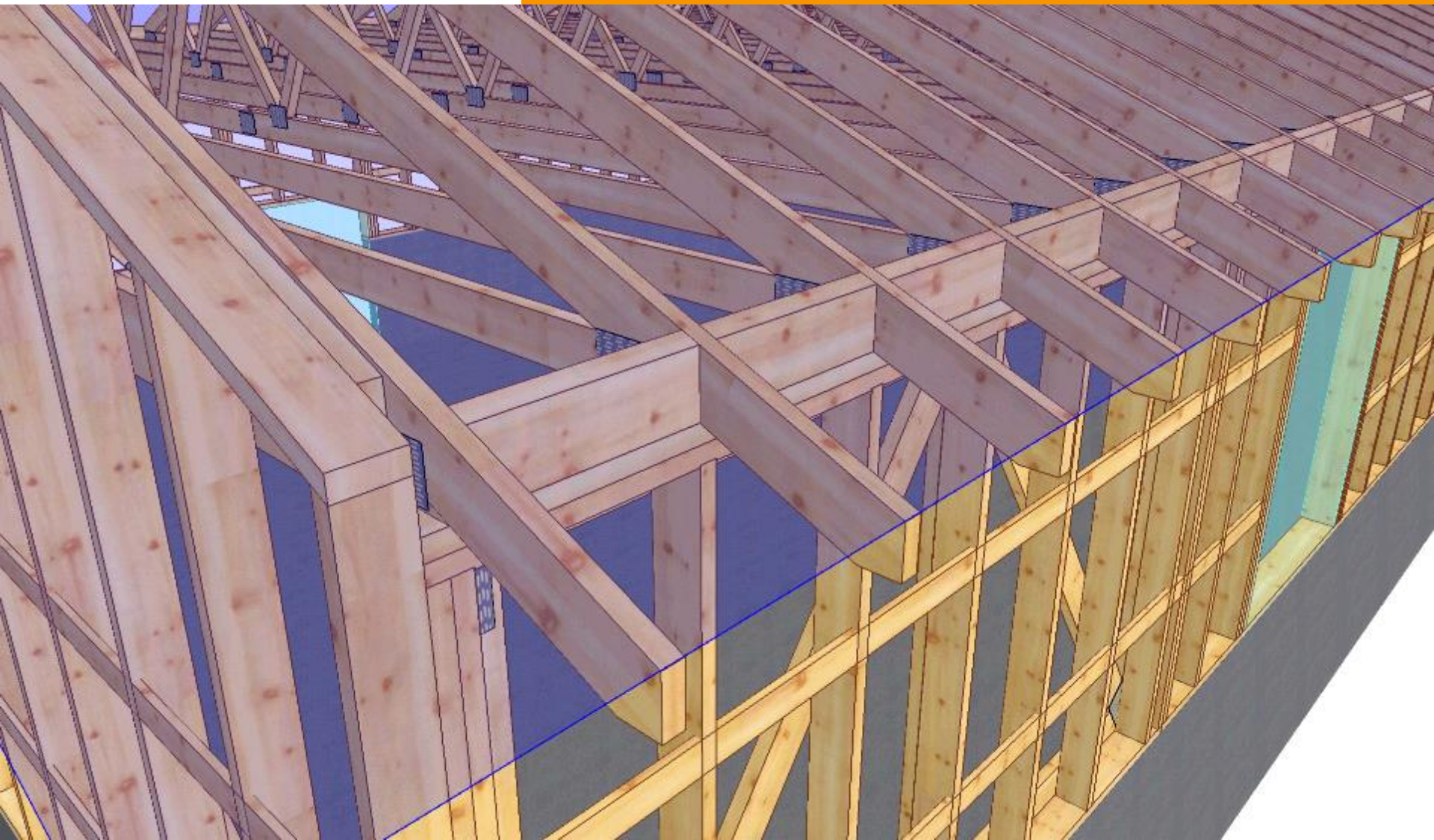
Jatak[®]

NARVEBYGGET



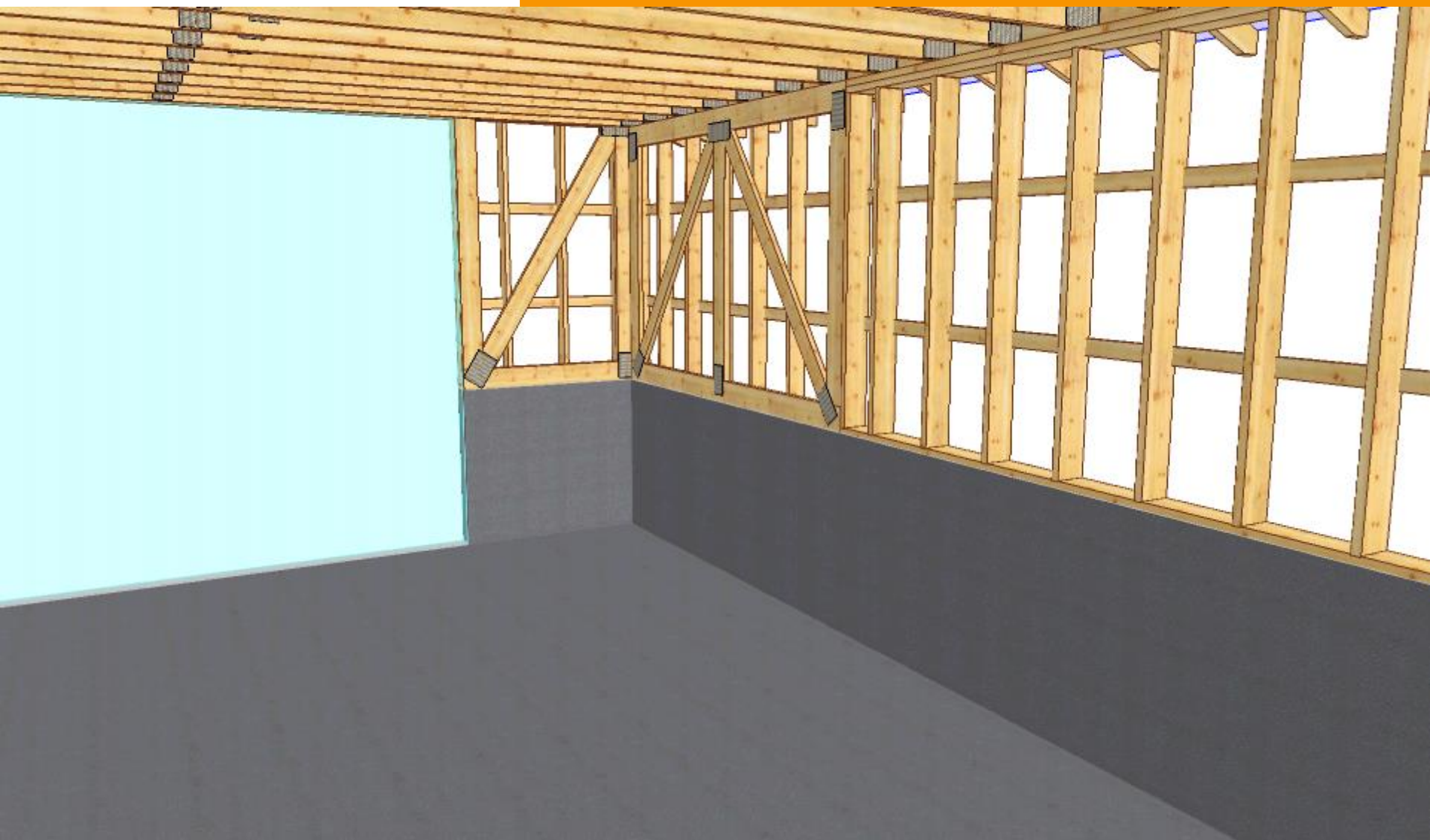
Jatak[®]

NARVEBYGGET



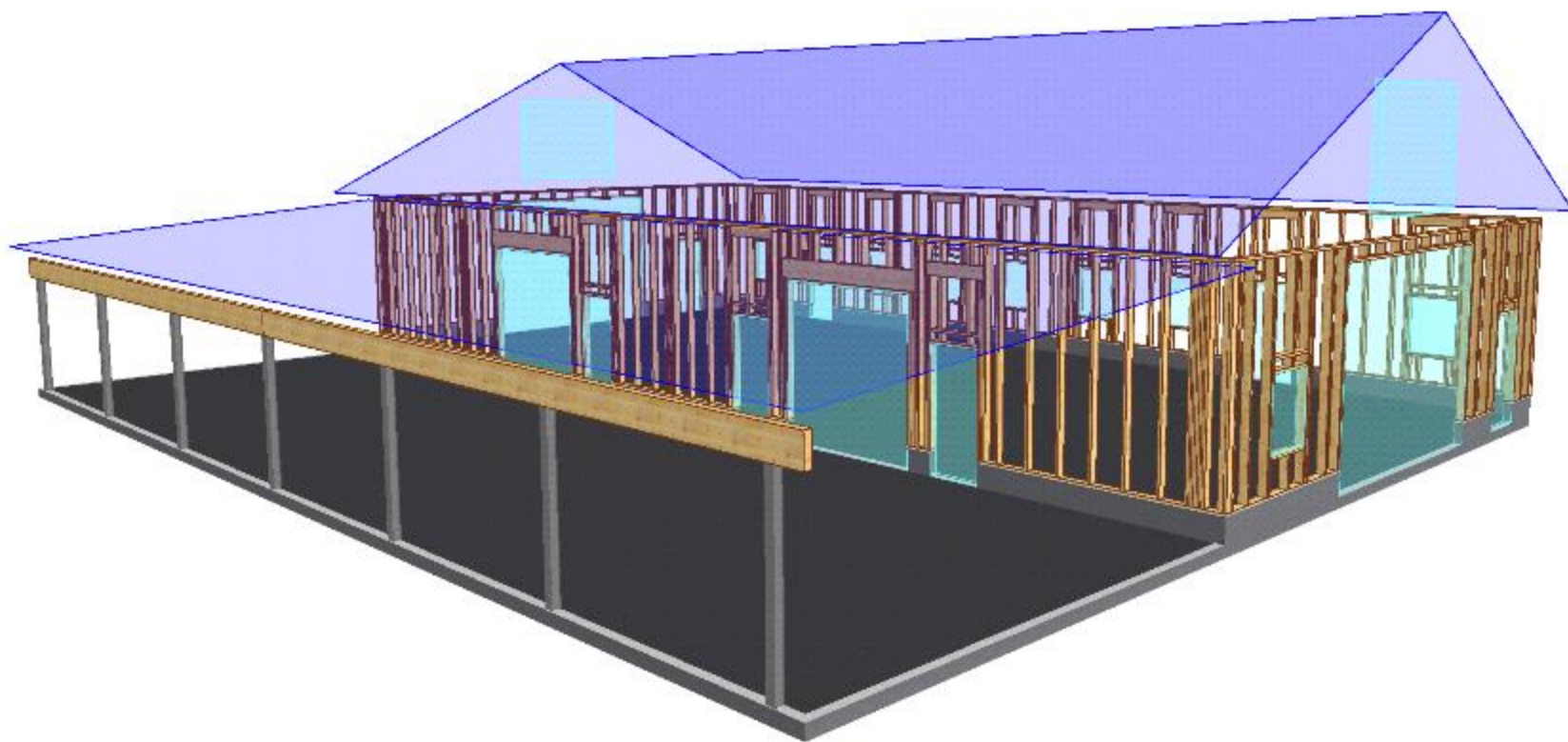
Jatak[®]

NARVEBYGGET



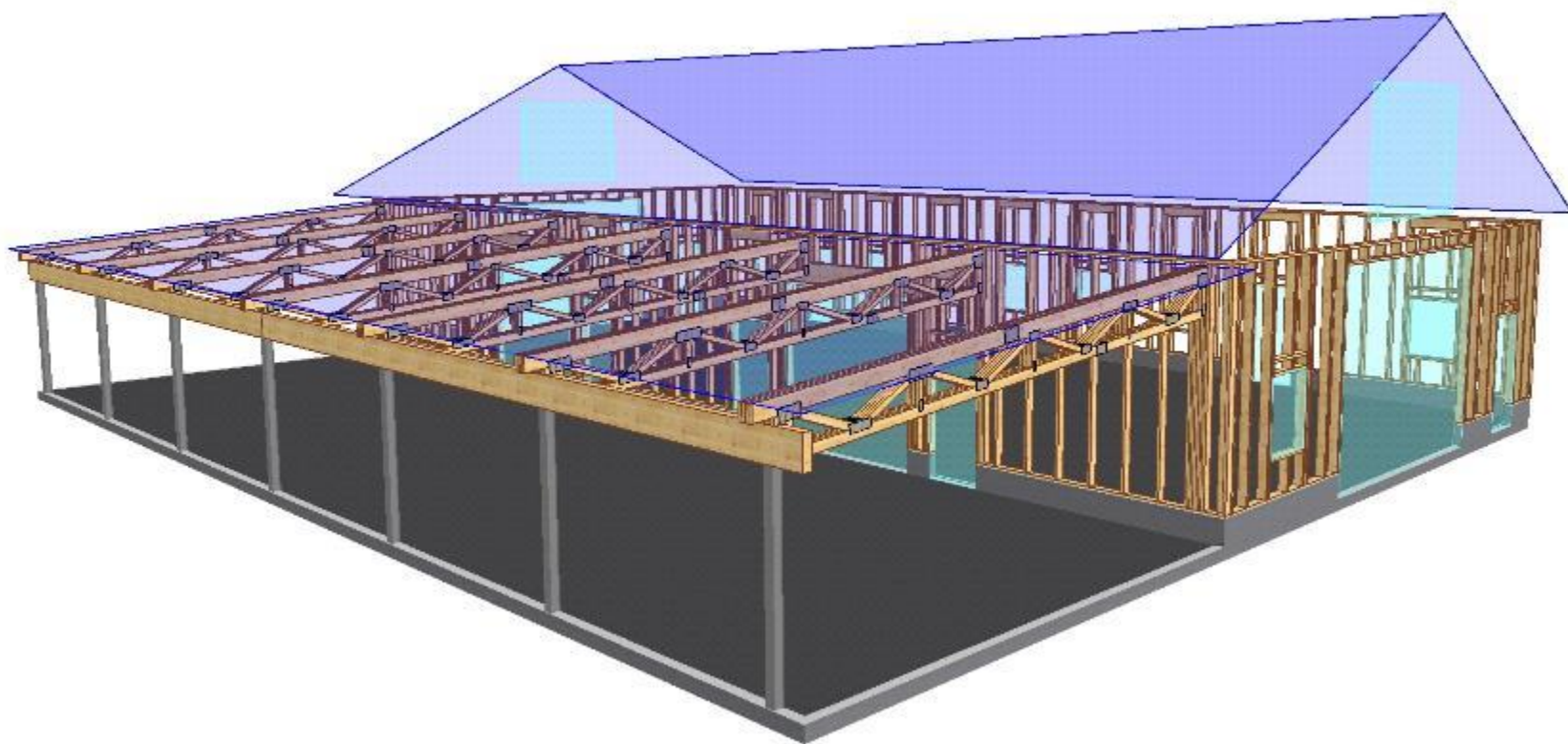
Jatak[®]

SØRHIDLE



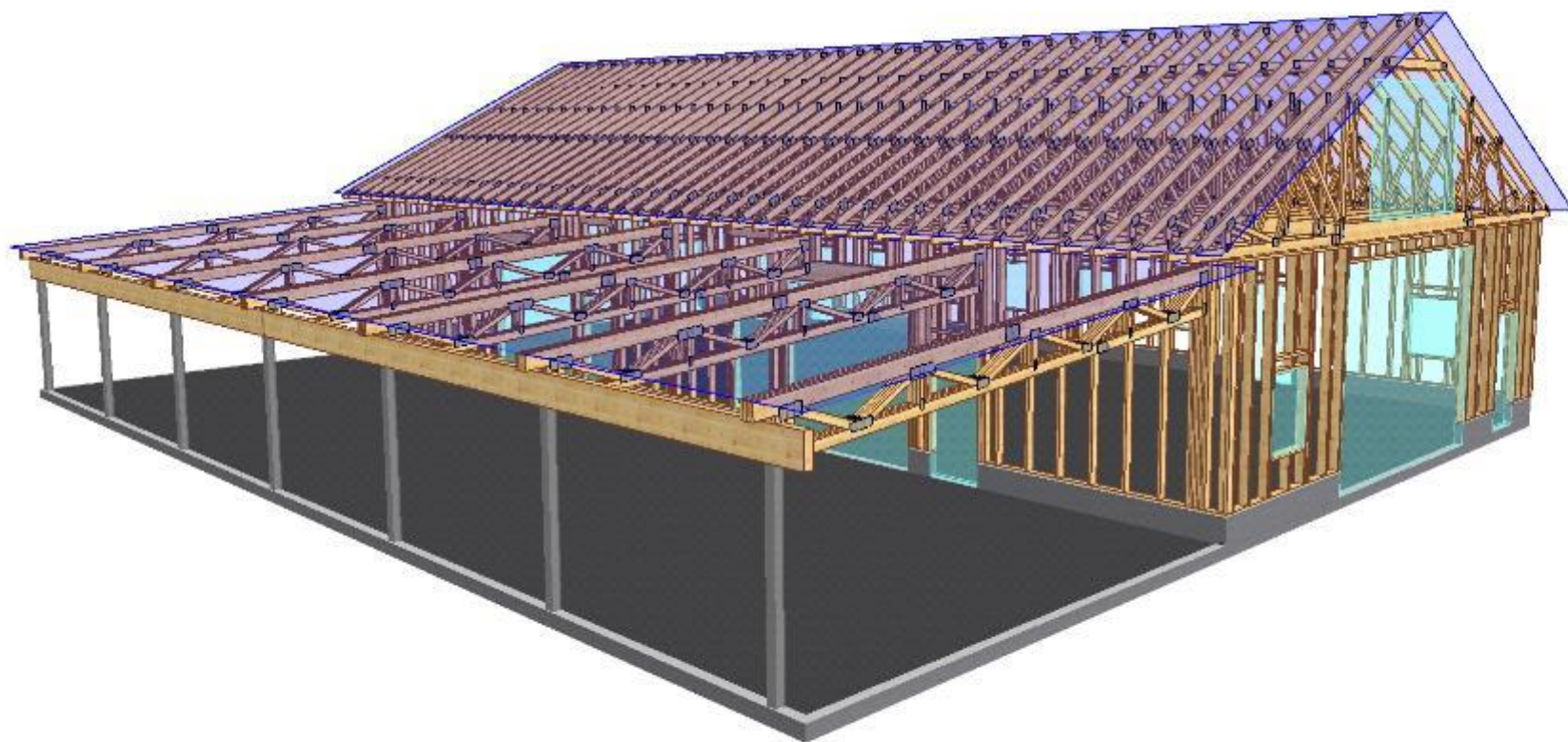
Jatak[®]

SØRHIDLE



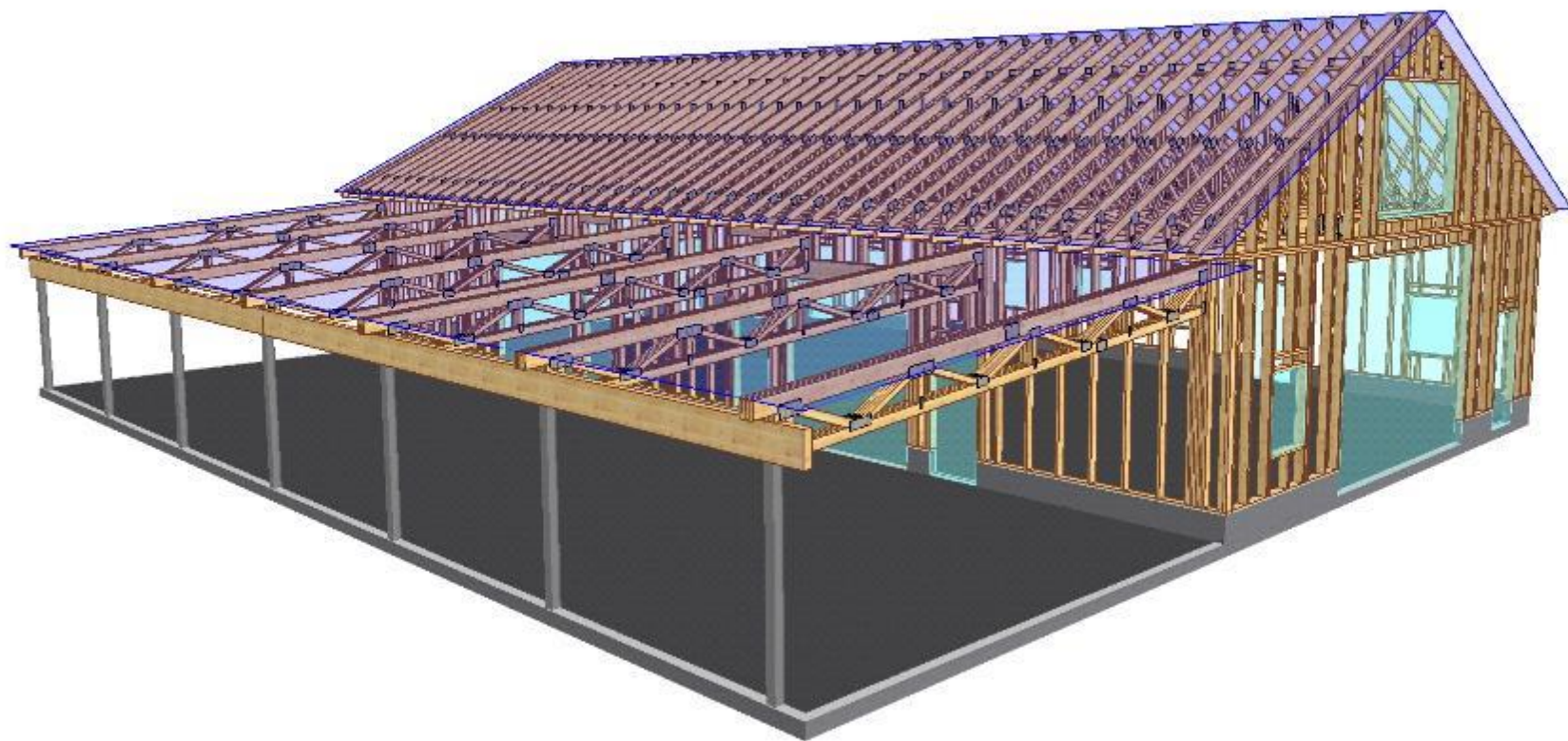
Jatak[®]

SØRHIDLE



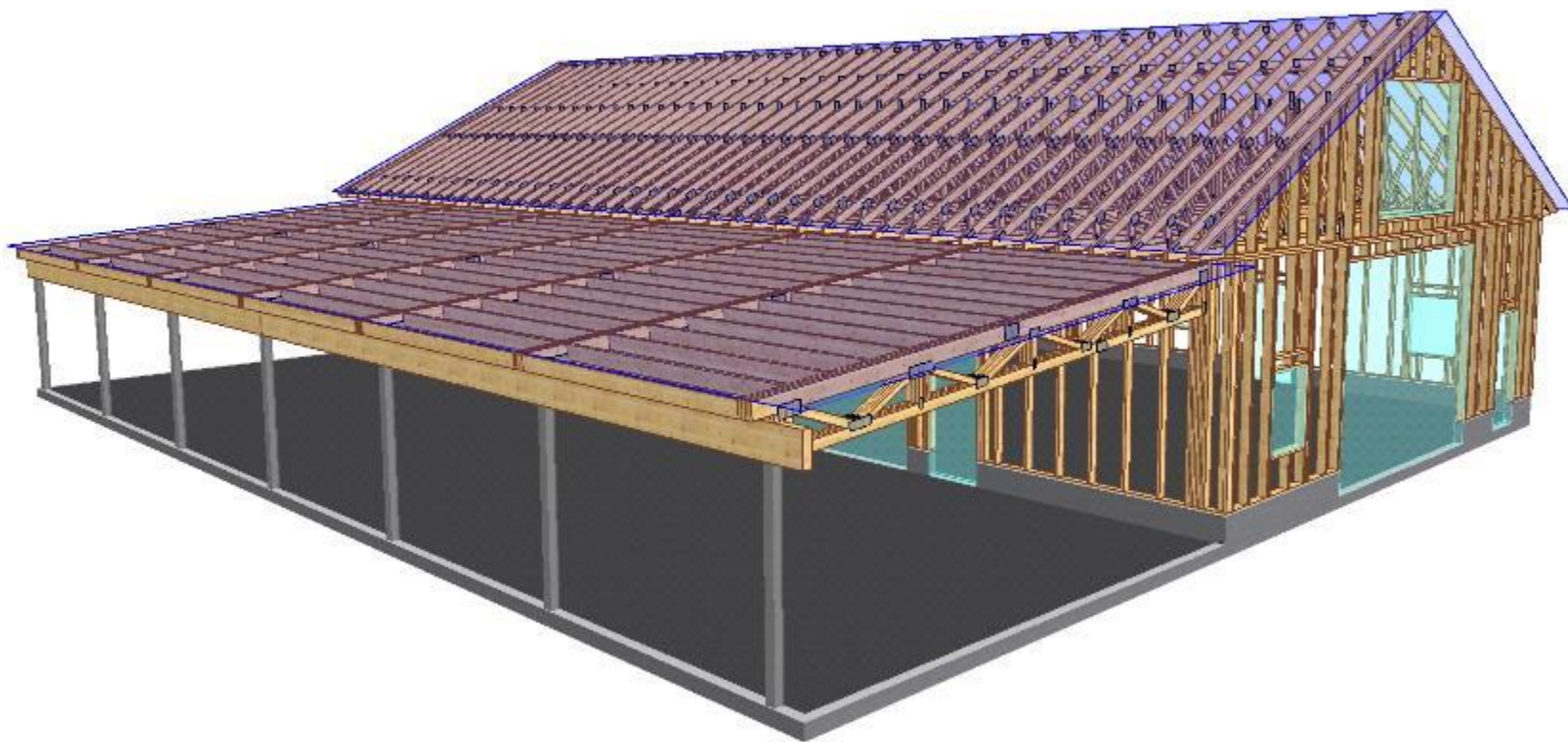
Jatak[®]

SØRHIDLE



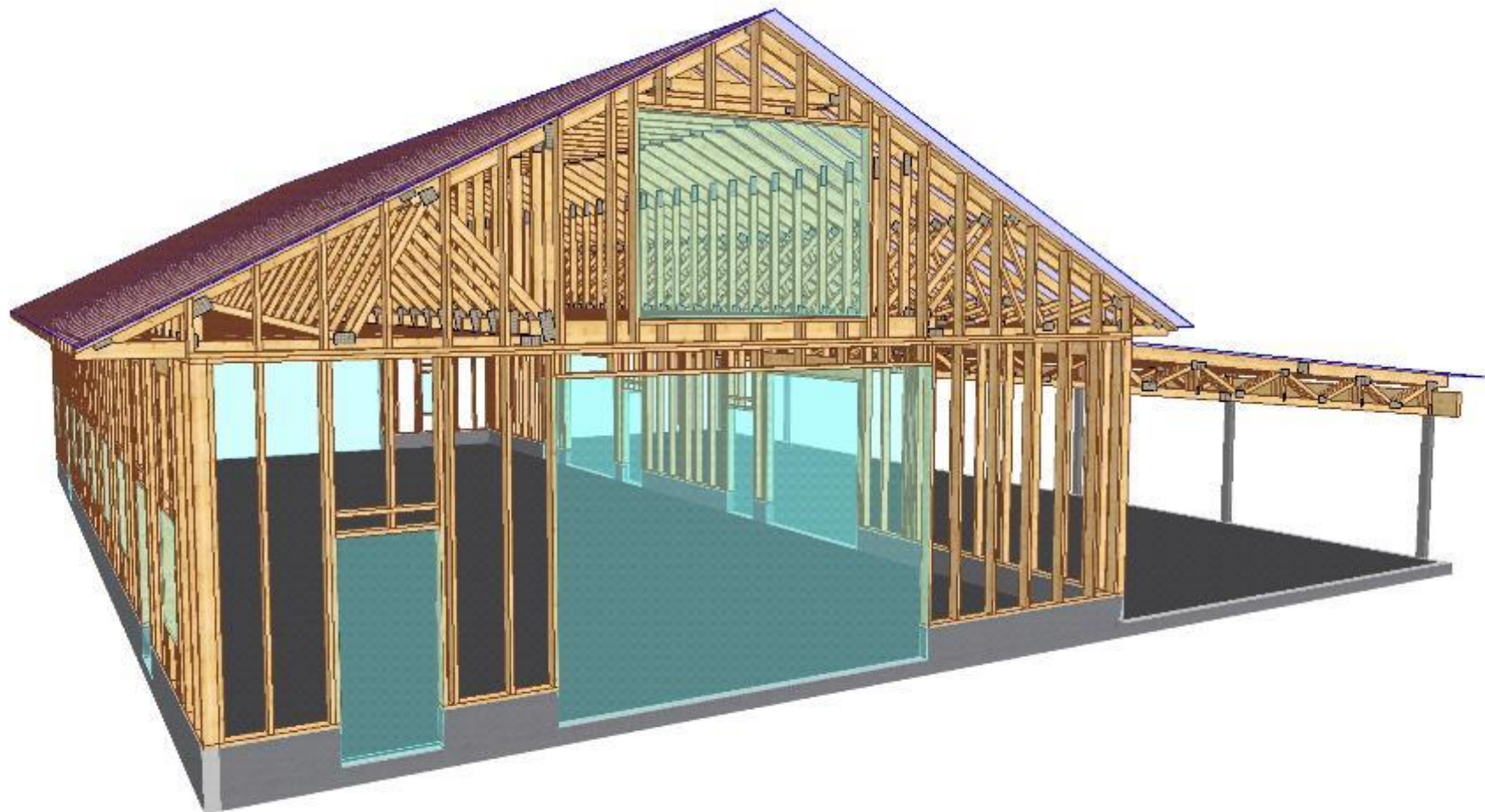
Jatak®

SØRHIDLE



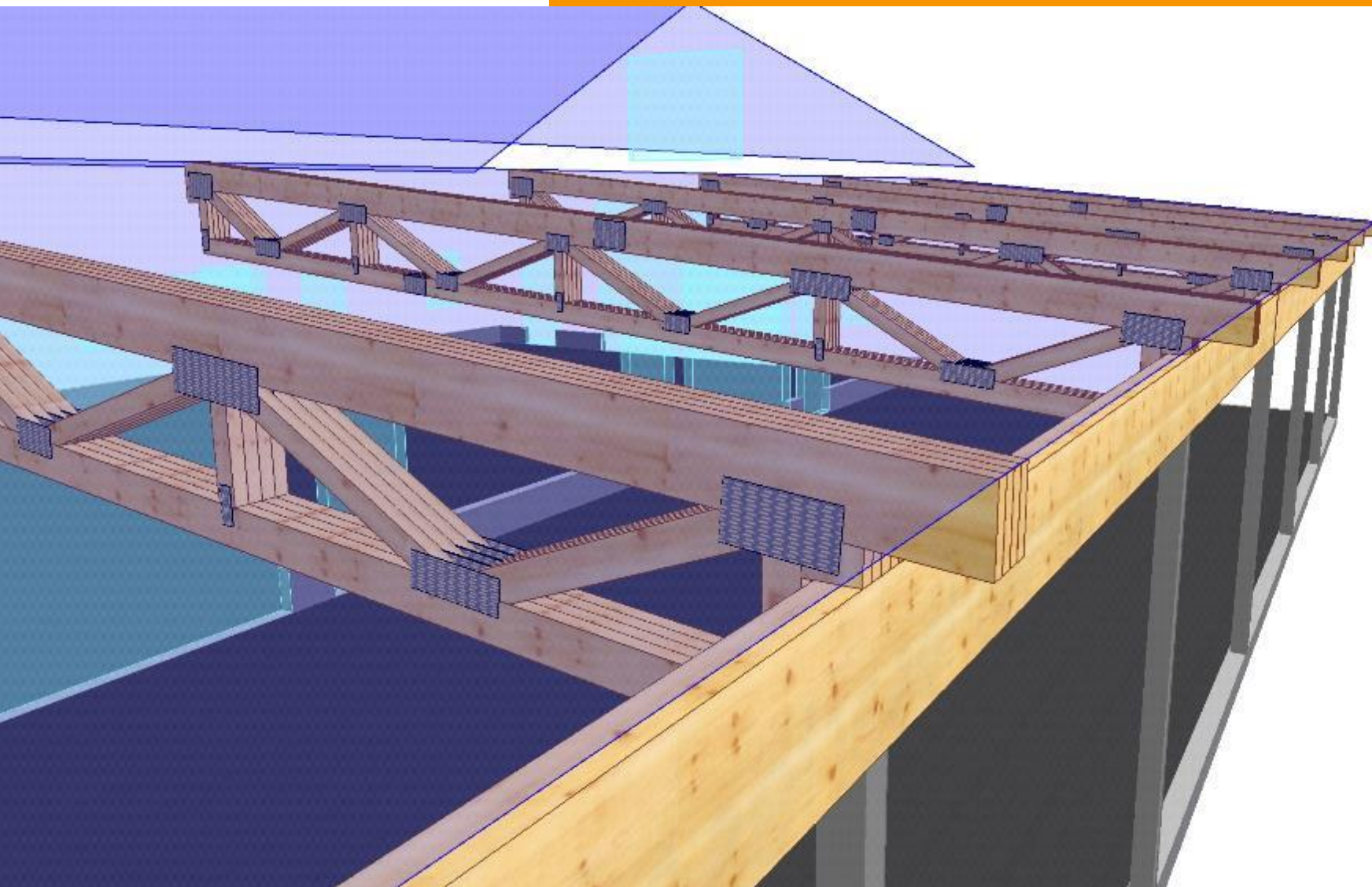
Jatak[®]

SØRHIDLE



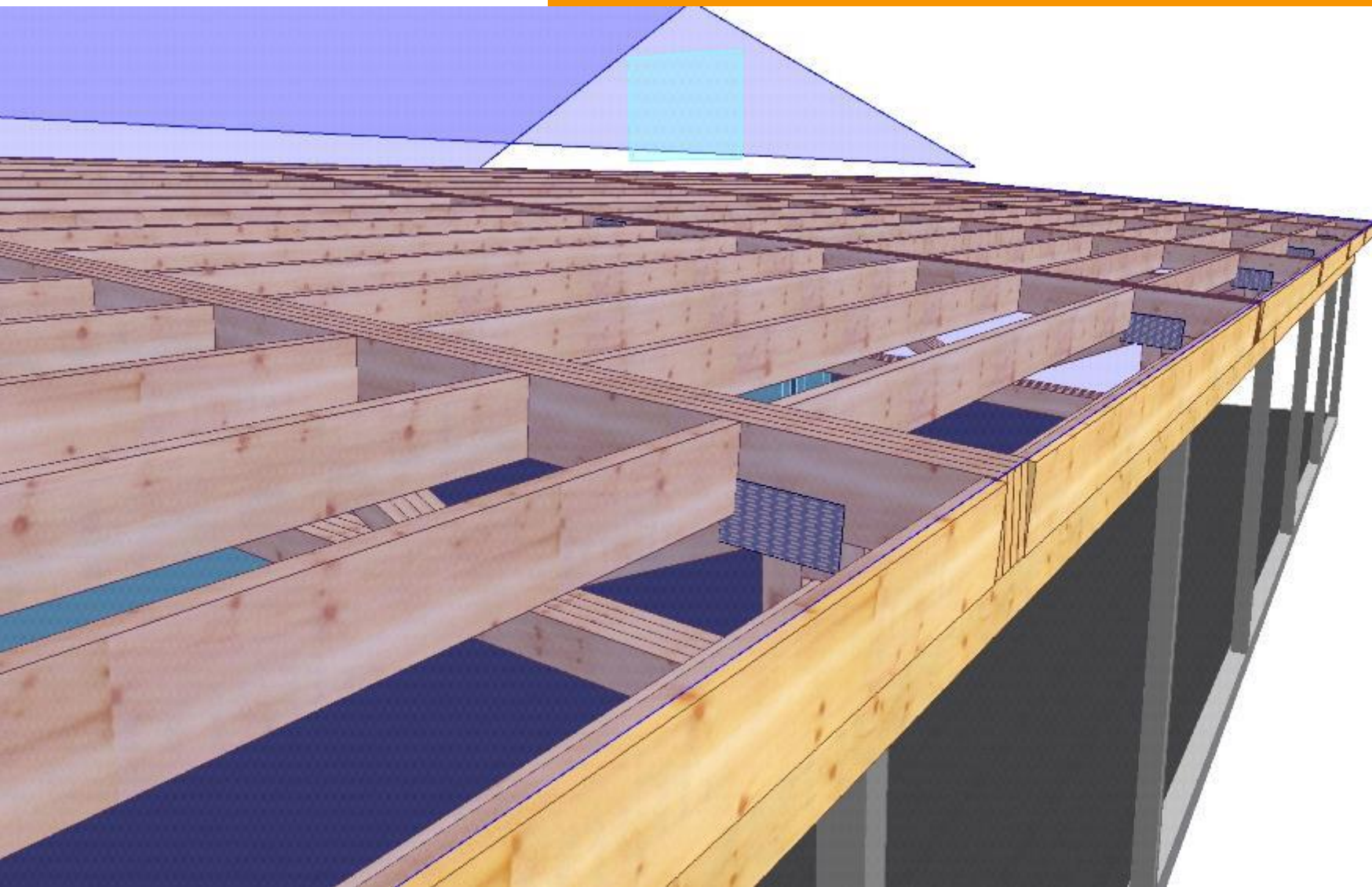
Jatak[®]

SØRHIDLE



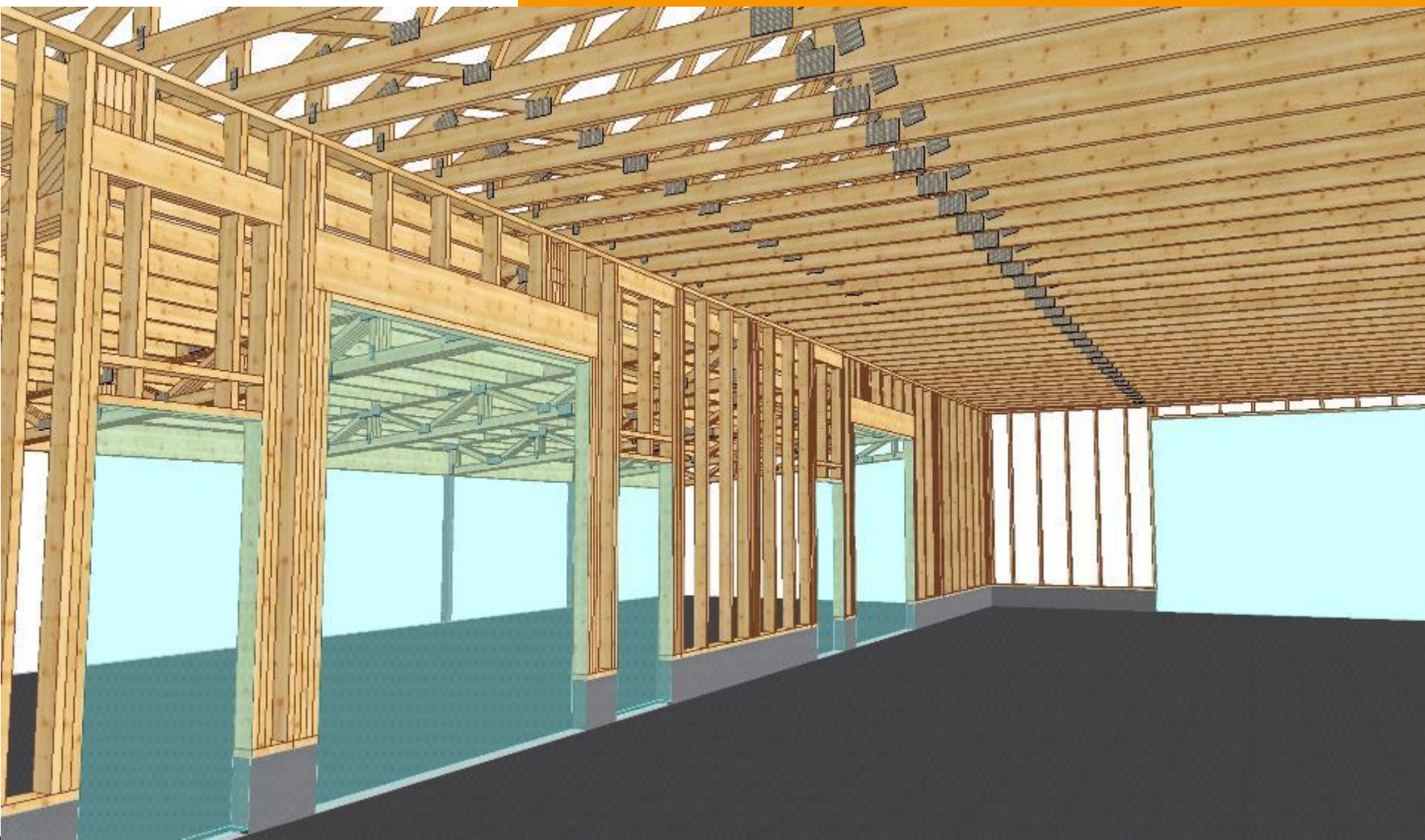
Jatak[®]

SØRHIDLE



Jatak[®]

SØRHIDLE



Jatak[®]

SØRHIDLE



Jatak[®]

SØRHIDLE



Jatak[®]

SØRHIDLE



Jatak[®]

SØRHIDLE



Jatak[®]

SØRHIDLE



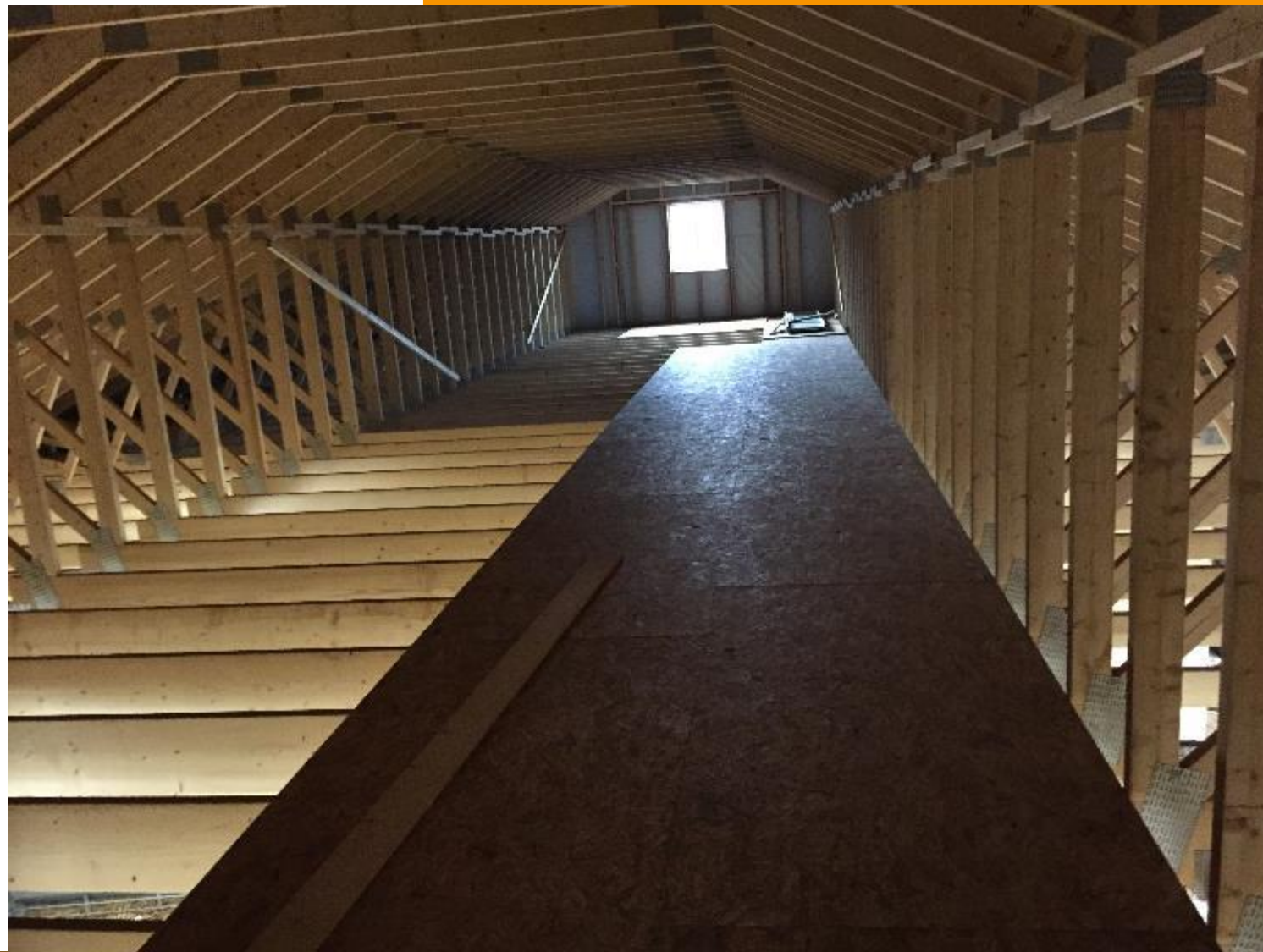
Jatak[®]

SØRHIDLE



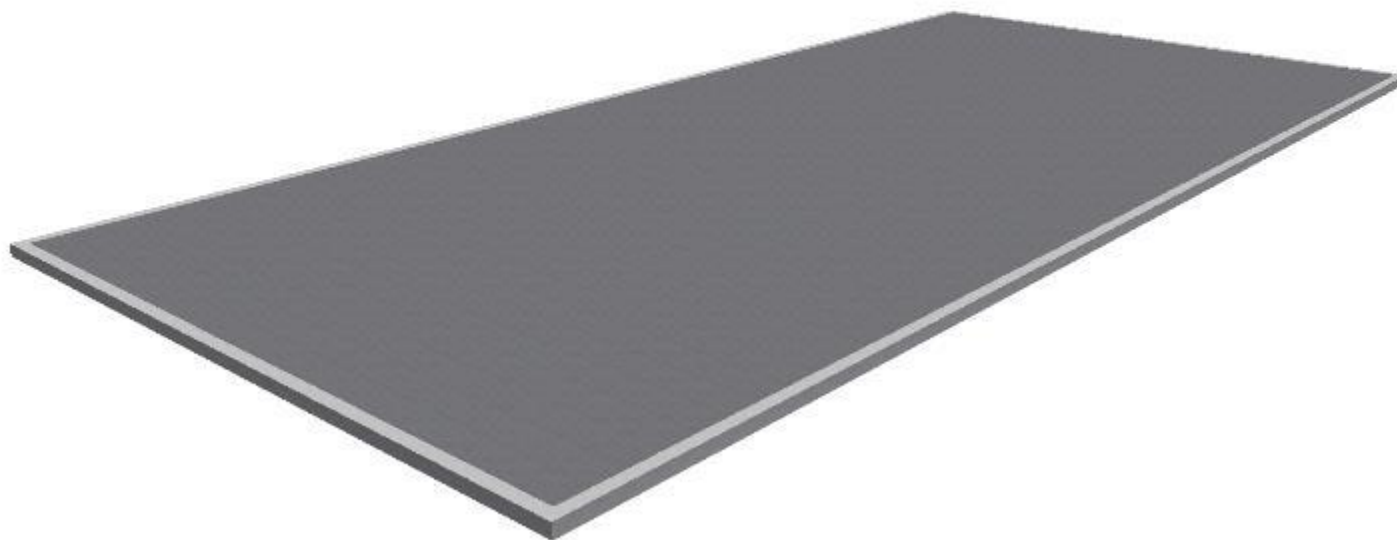
Jatak[®]

SØRHIDLE



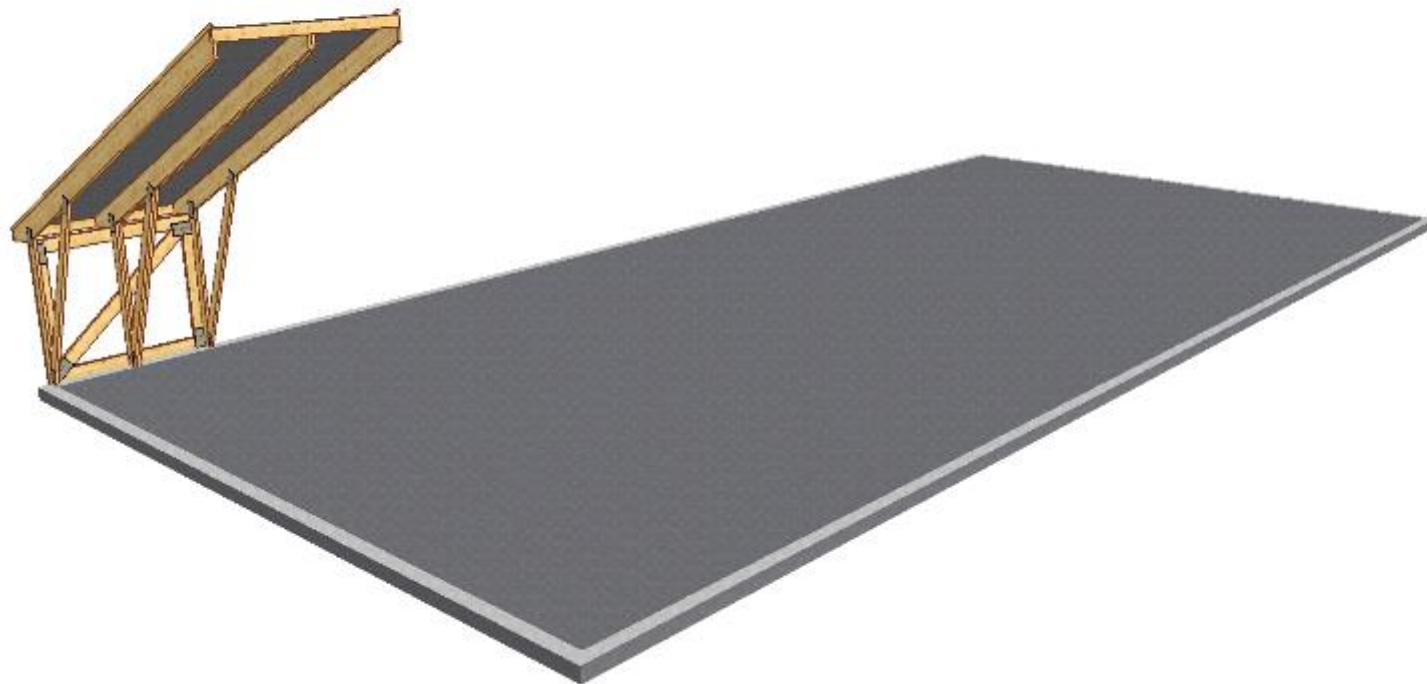


UTVIKLINGSPROSJEKT



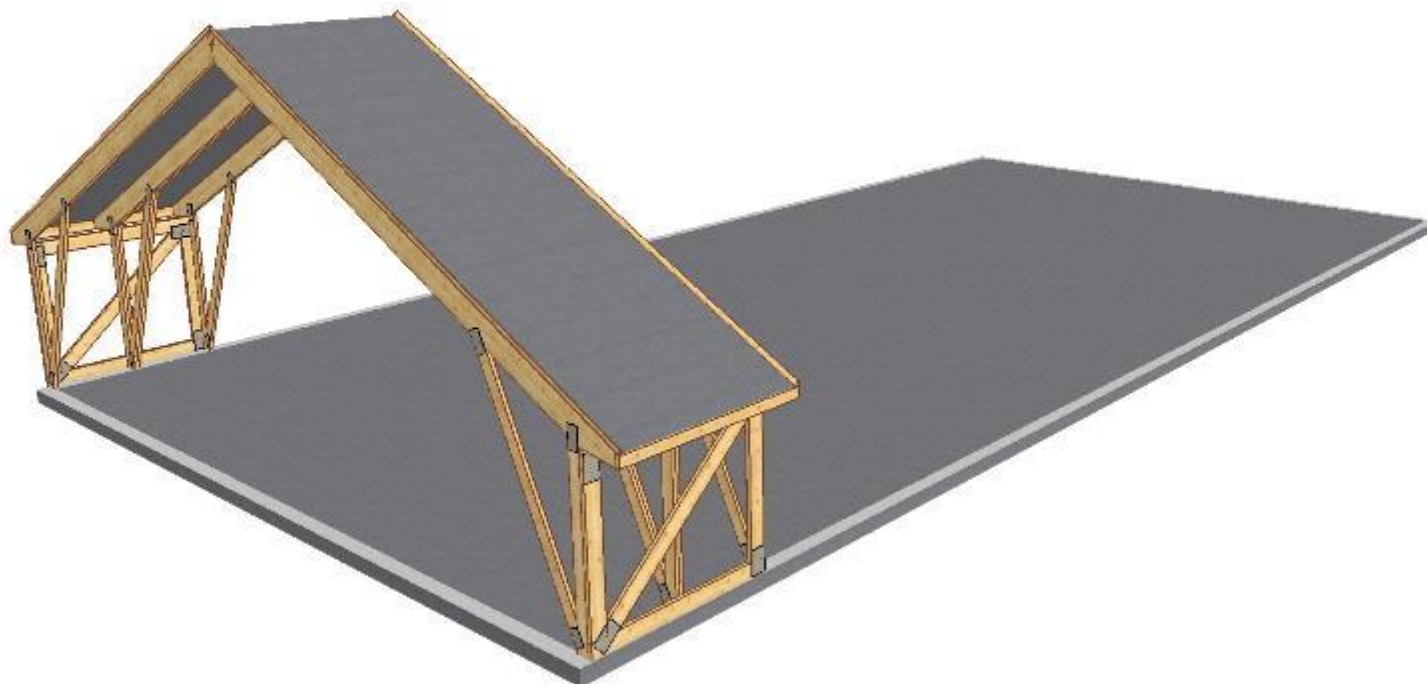


UTVIKLINGSPROSJEKT



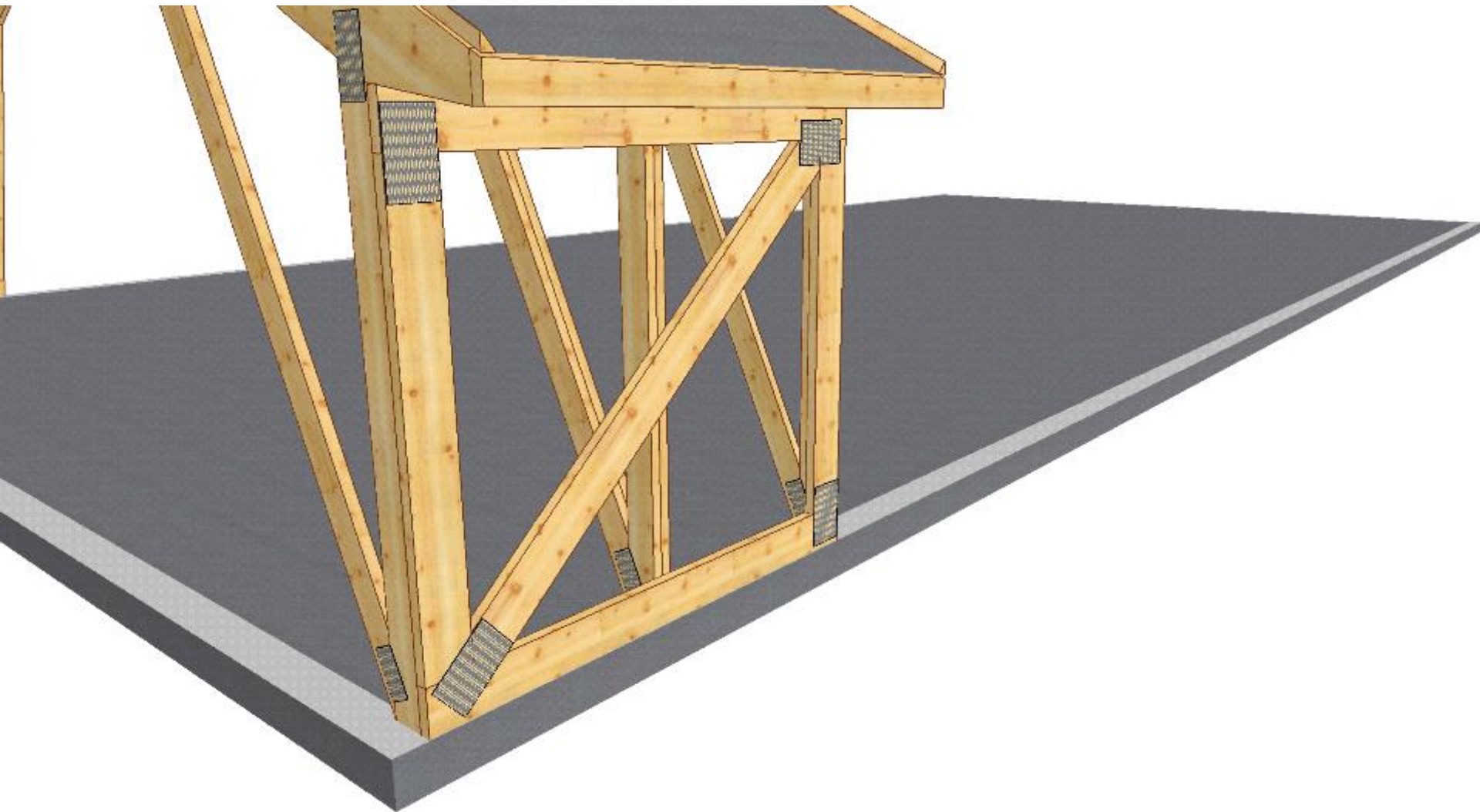


UTVIKLINGSPROSJEKT



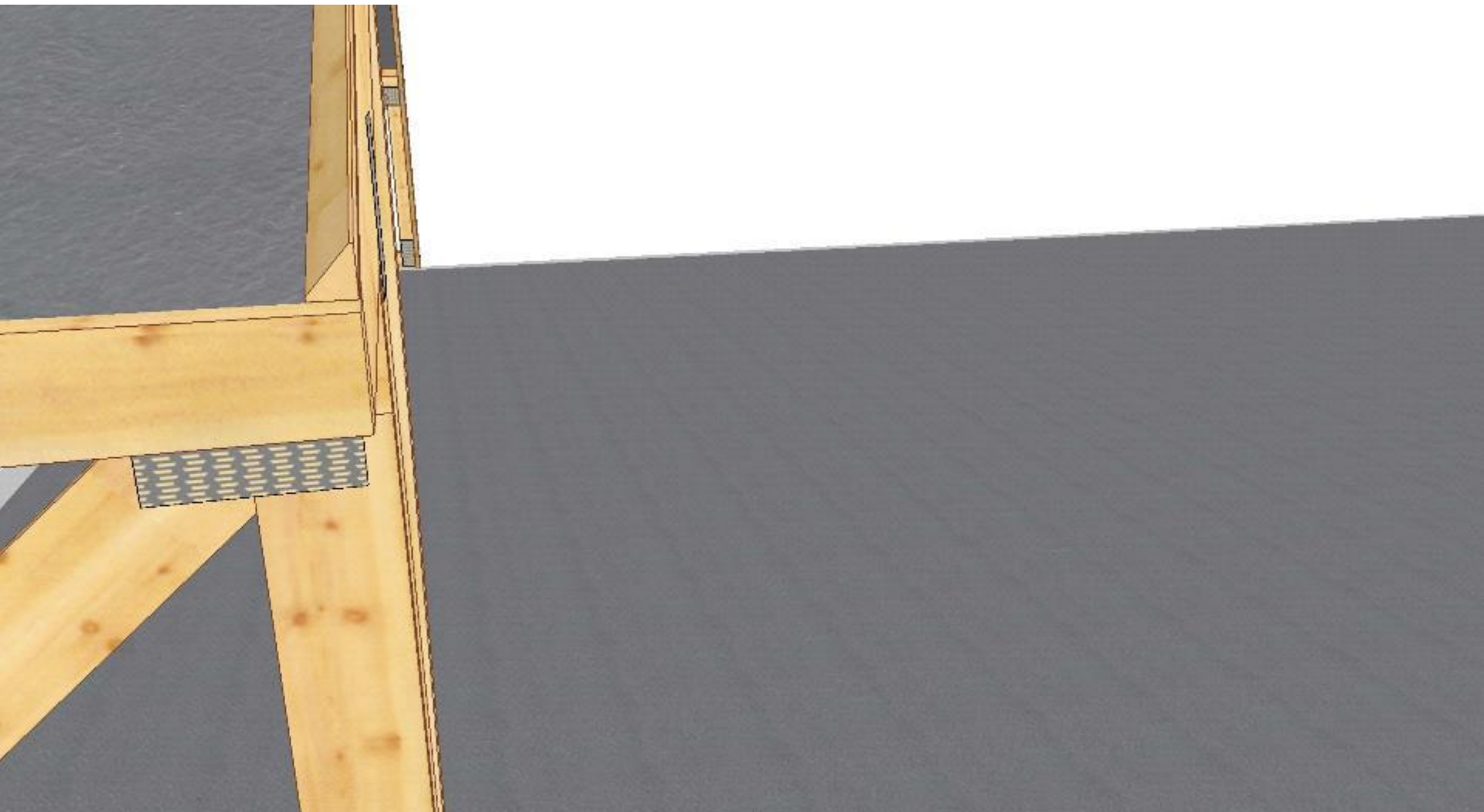


UTVIKLINGSPROSJEKT



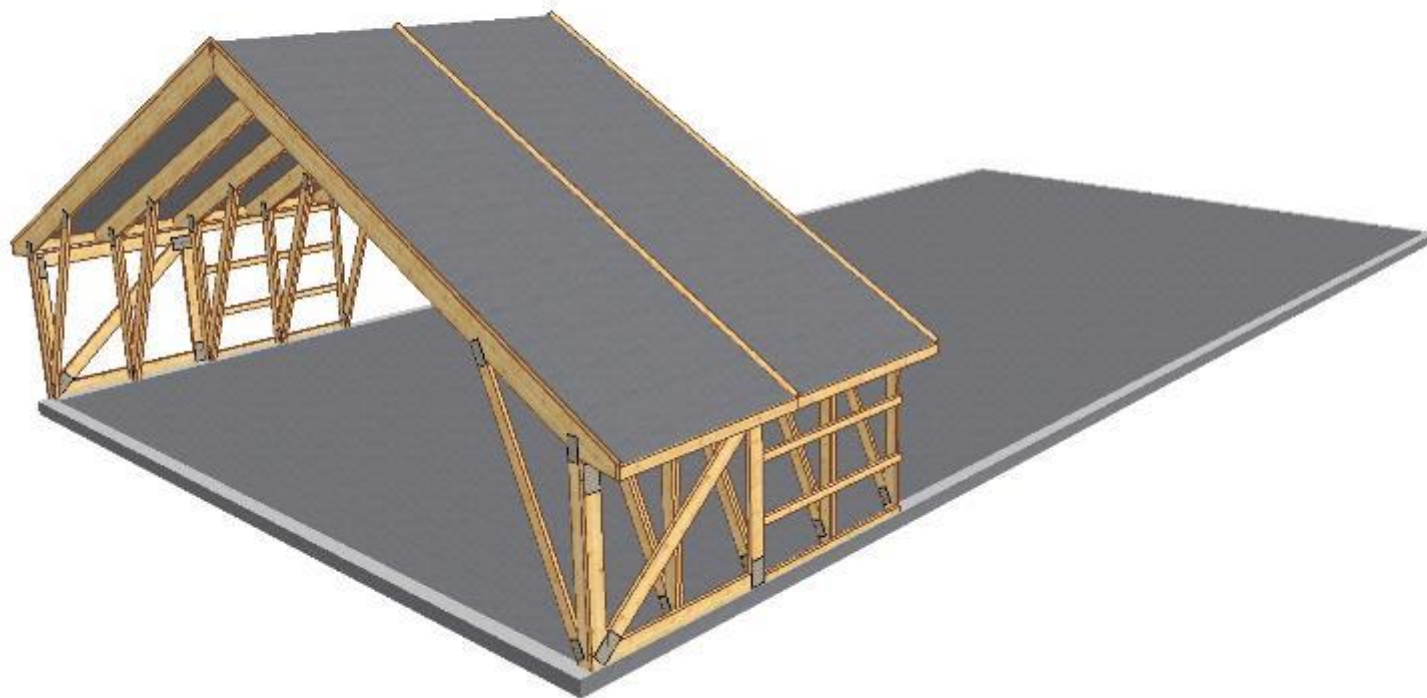


UTVIKLINGSPROSJEKT



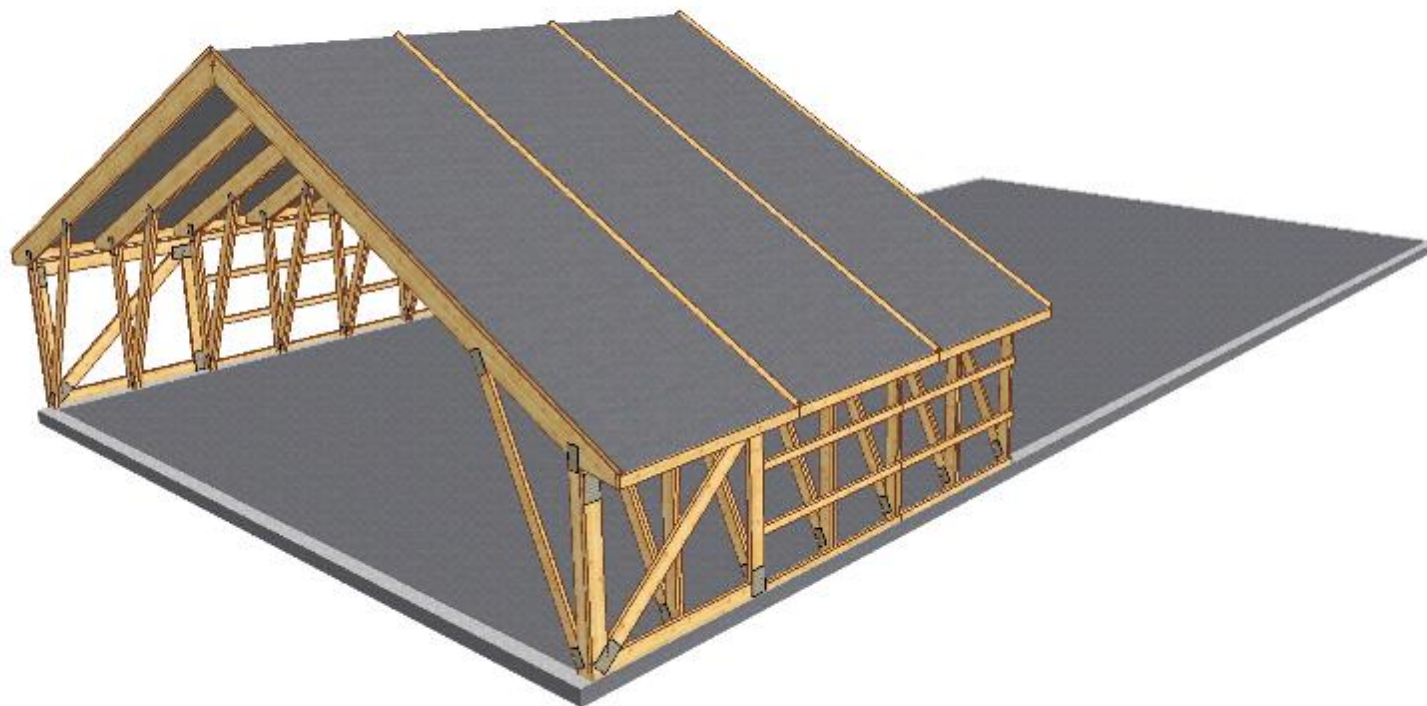


UTVIKLINGSPROSJEKT





UTVIKLINGSPROSJEKT





UTVIKLINGSPROSJEKT





UTVIKLINGSPROSJEKT



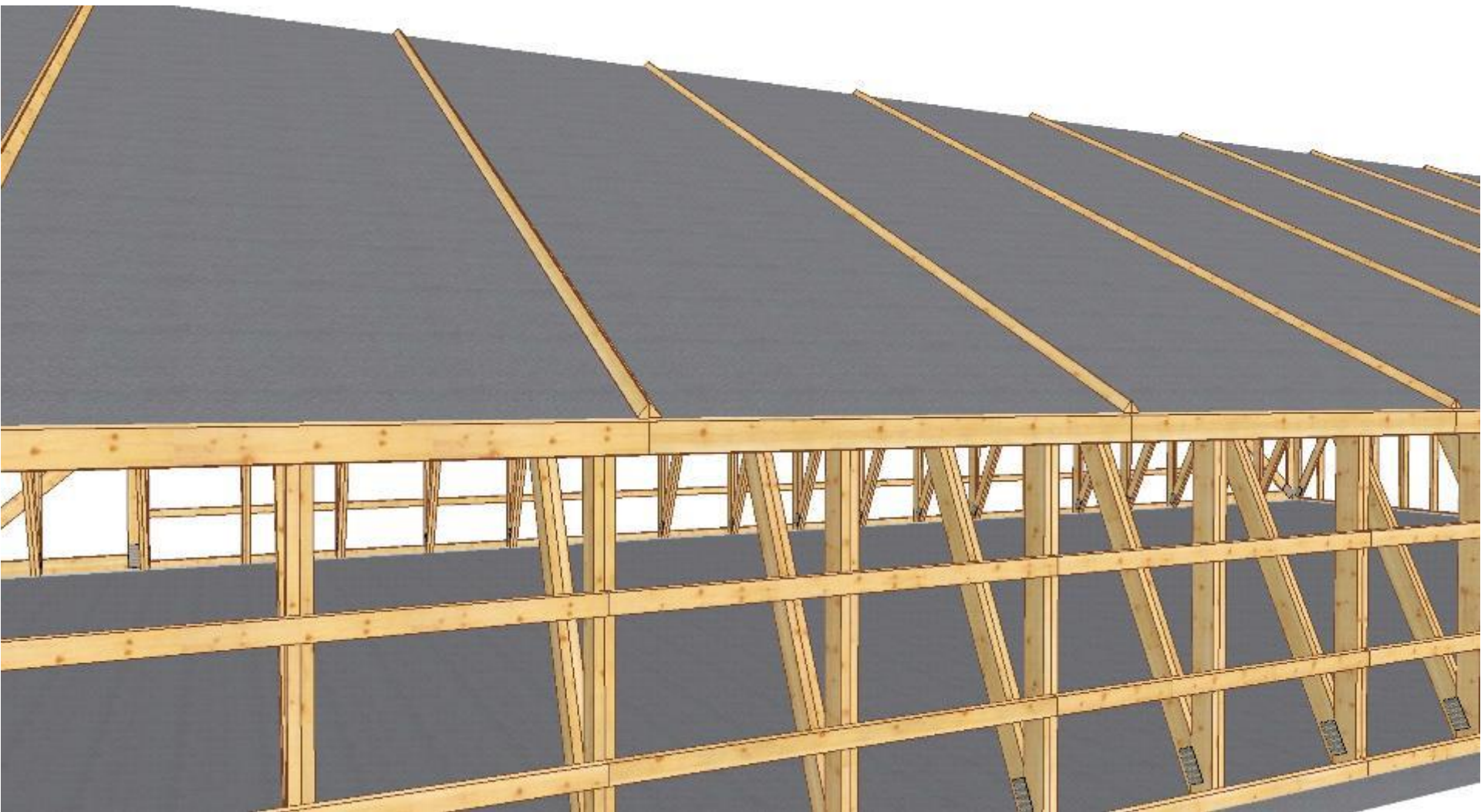


UTVIKLINGSPROSJEKT



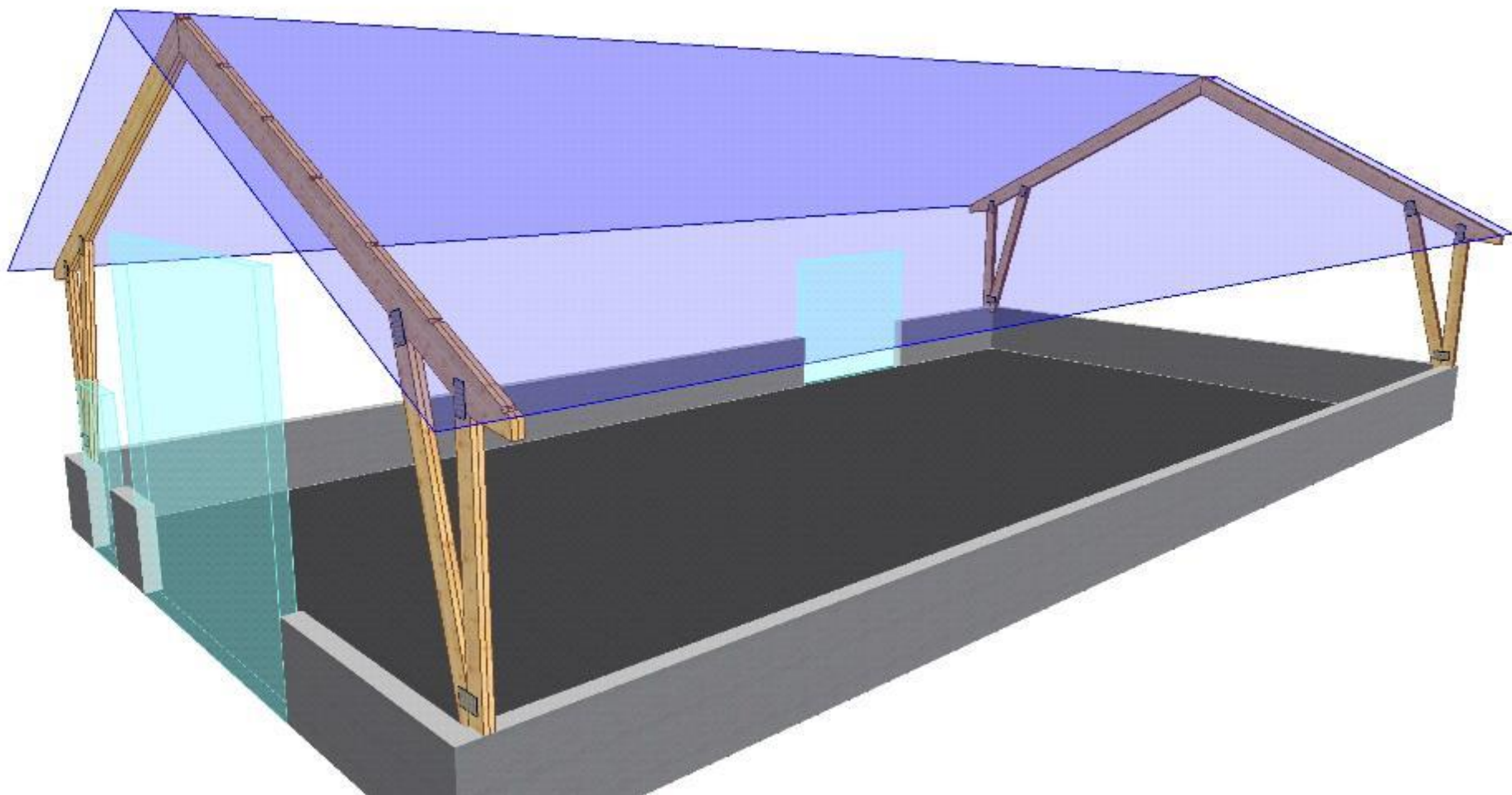


UTVIKLINGSPROSJEKT



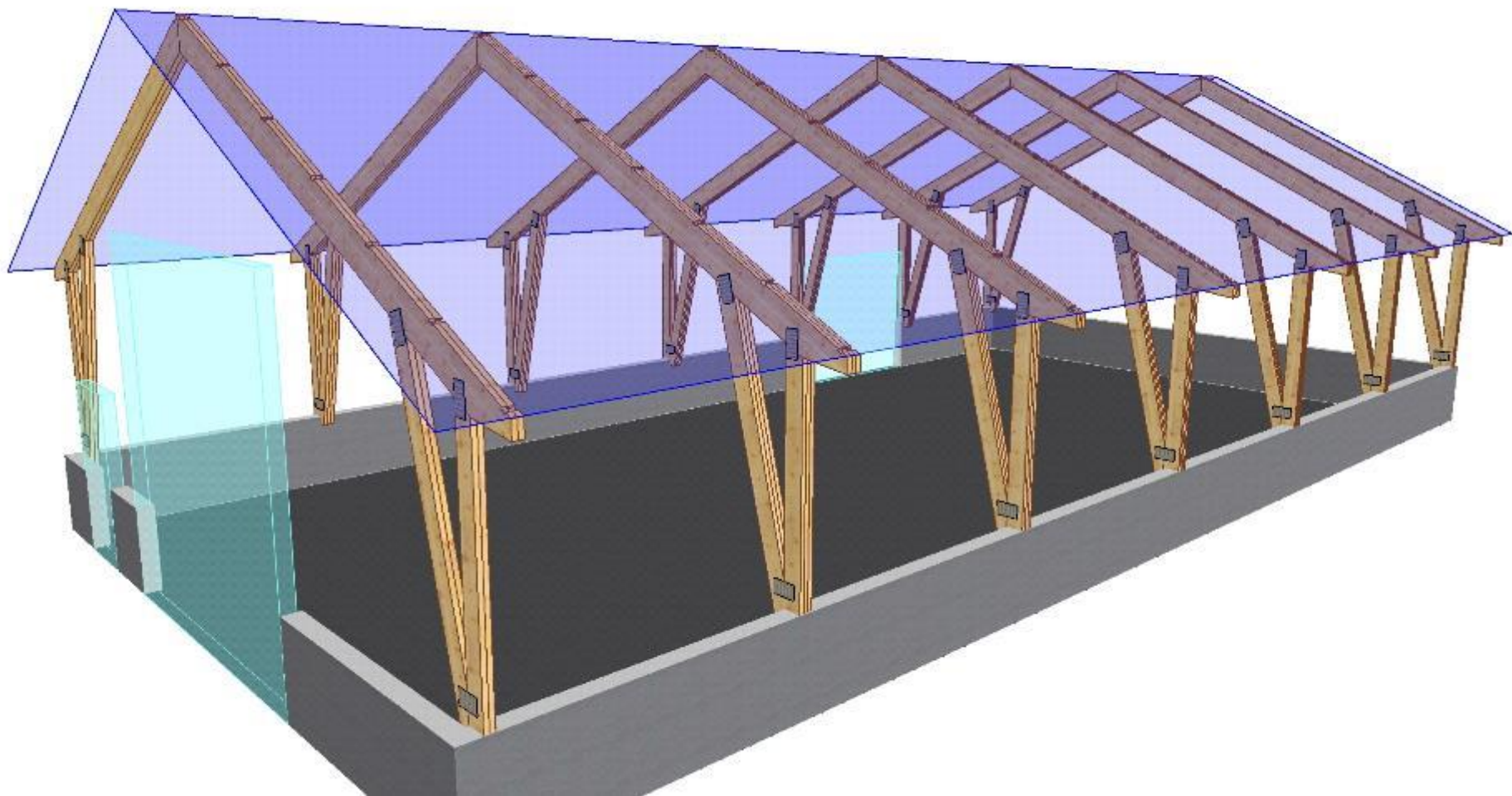
Jatak[®]

MONTERINGSVENNLIGE BYGG



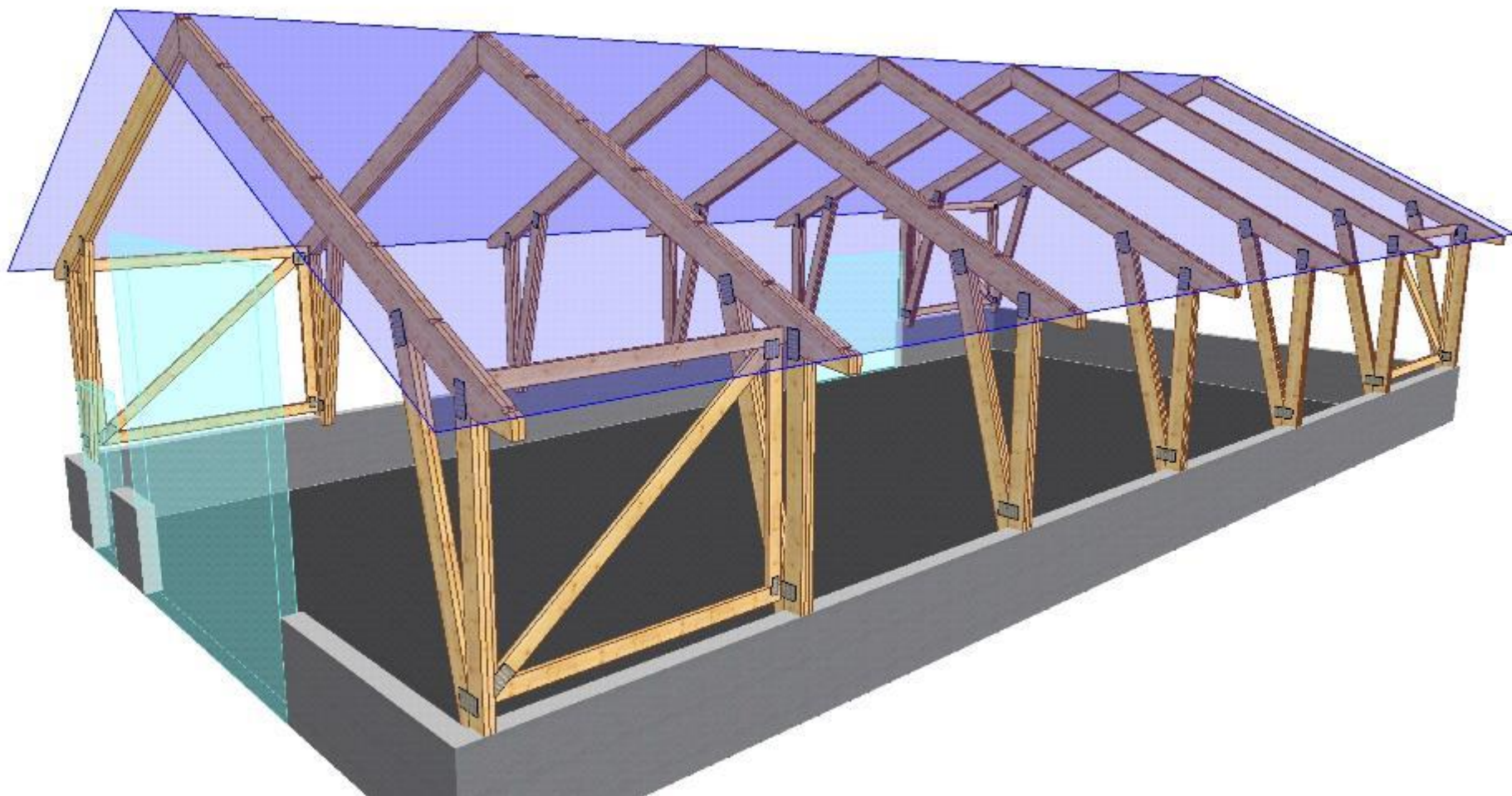


MONTERINGSVENNLIGE BYGG



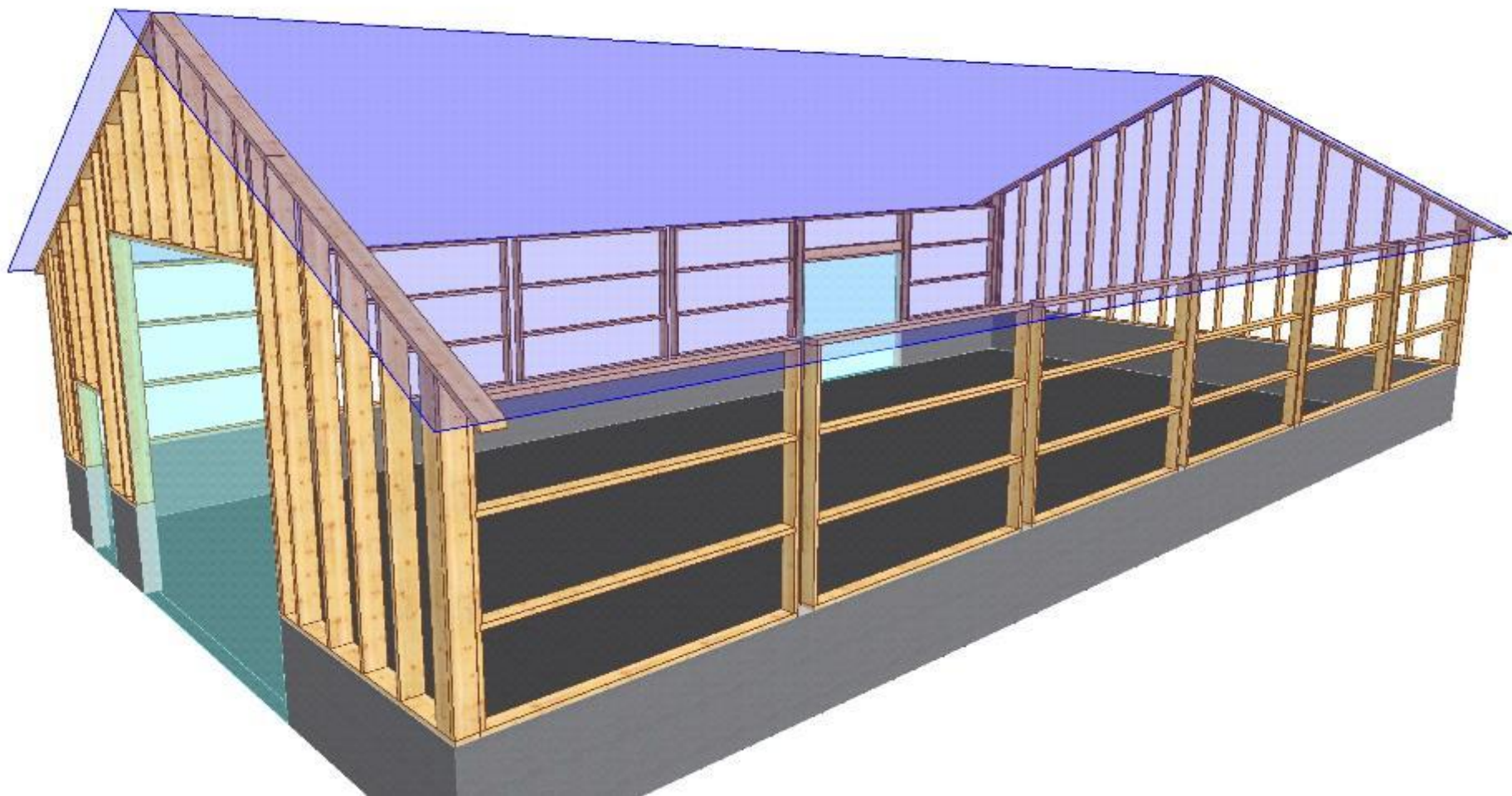
Jatak[®]

MONTERINGSVENNLIGE BYGG



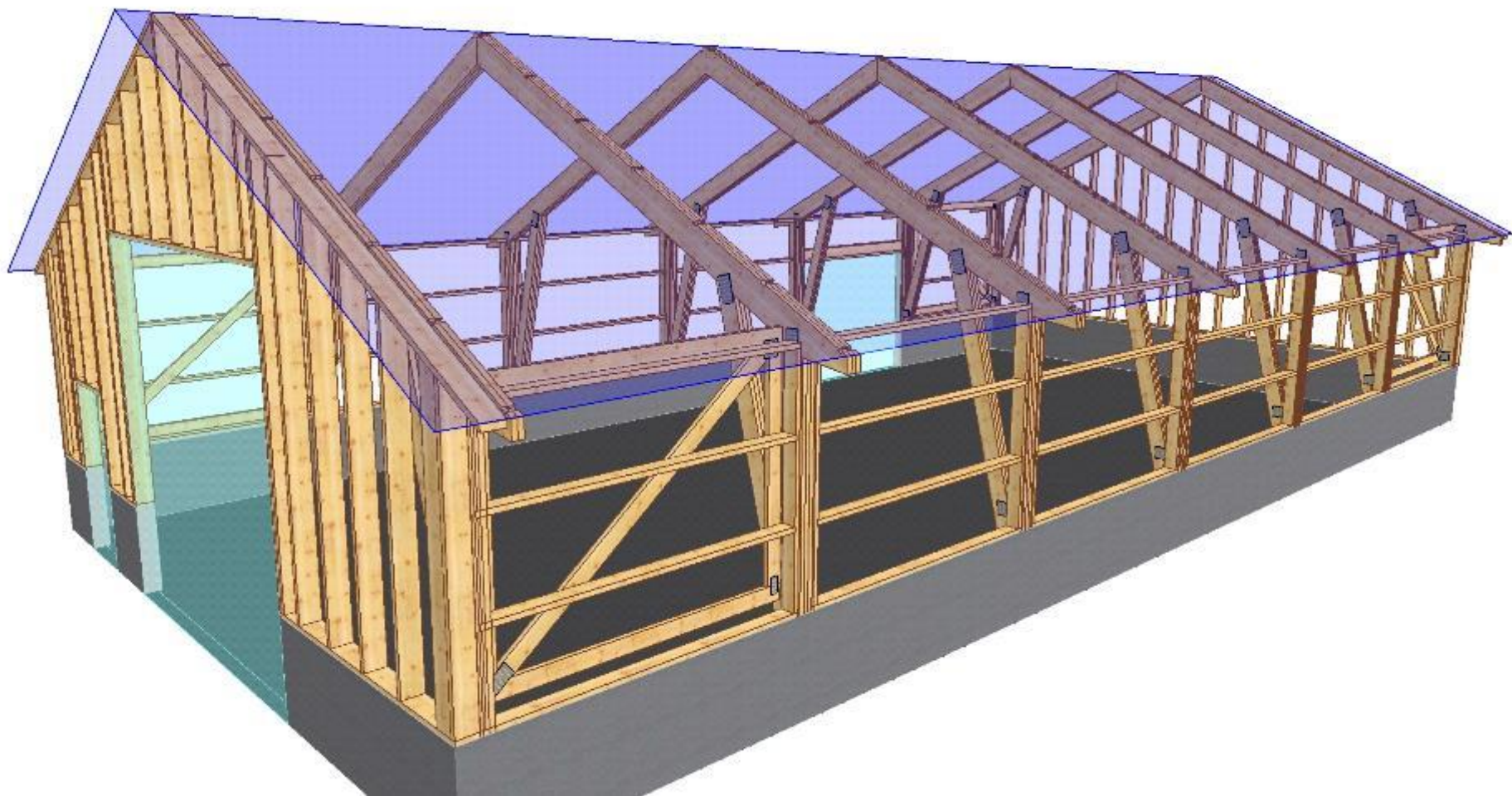


MONTERINGSVENNLIGE BYGG



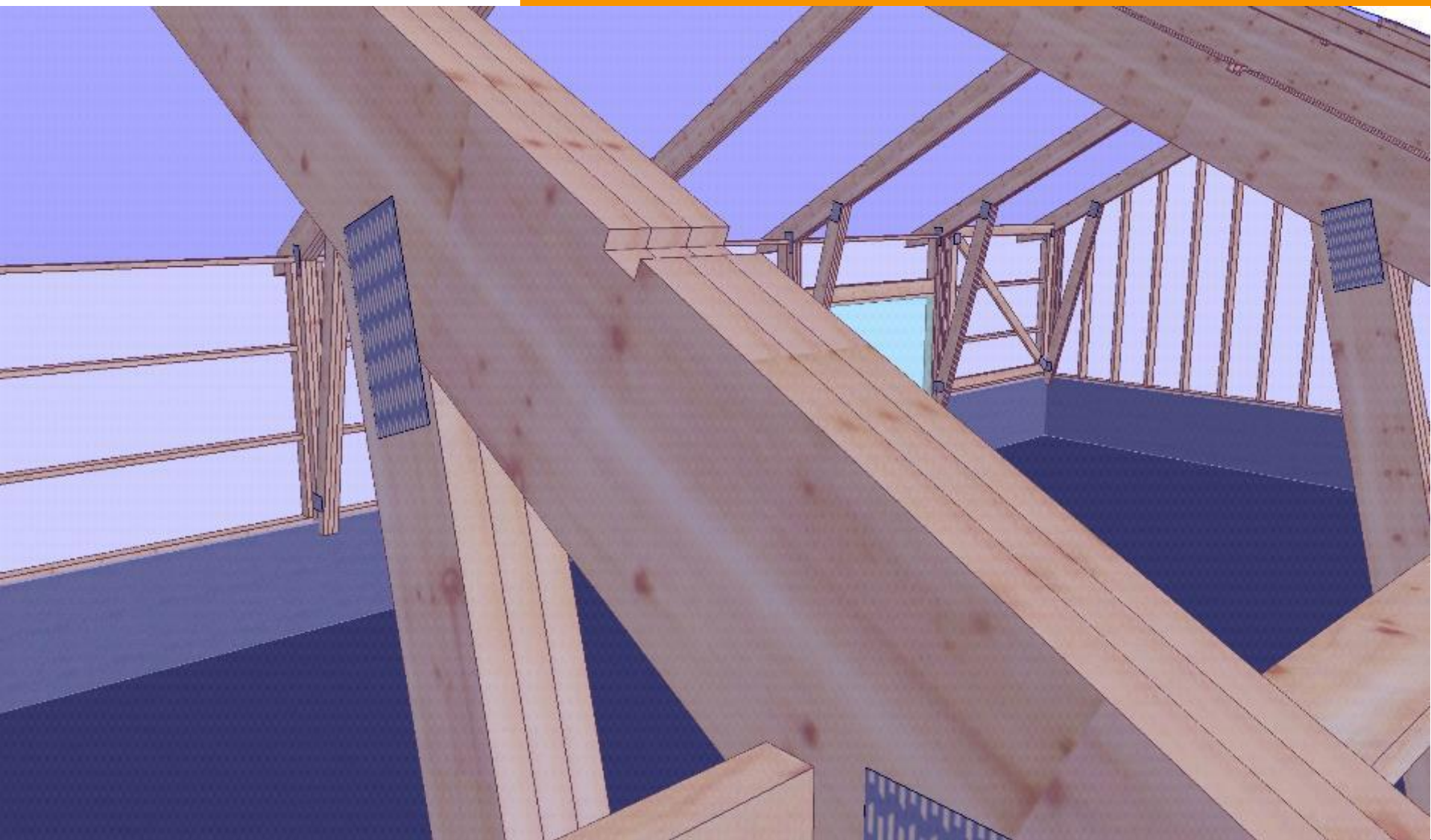
Jatak[®]

MONTERINGSVENNLIGE BYGG



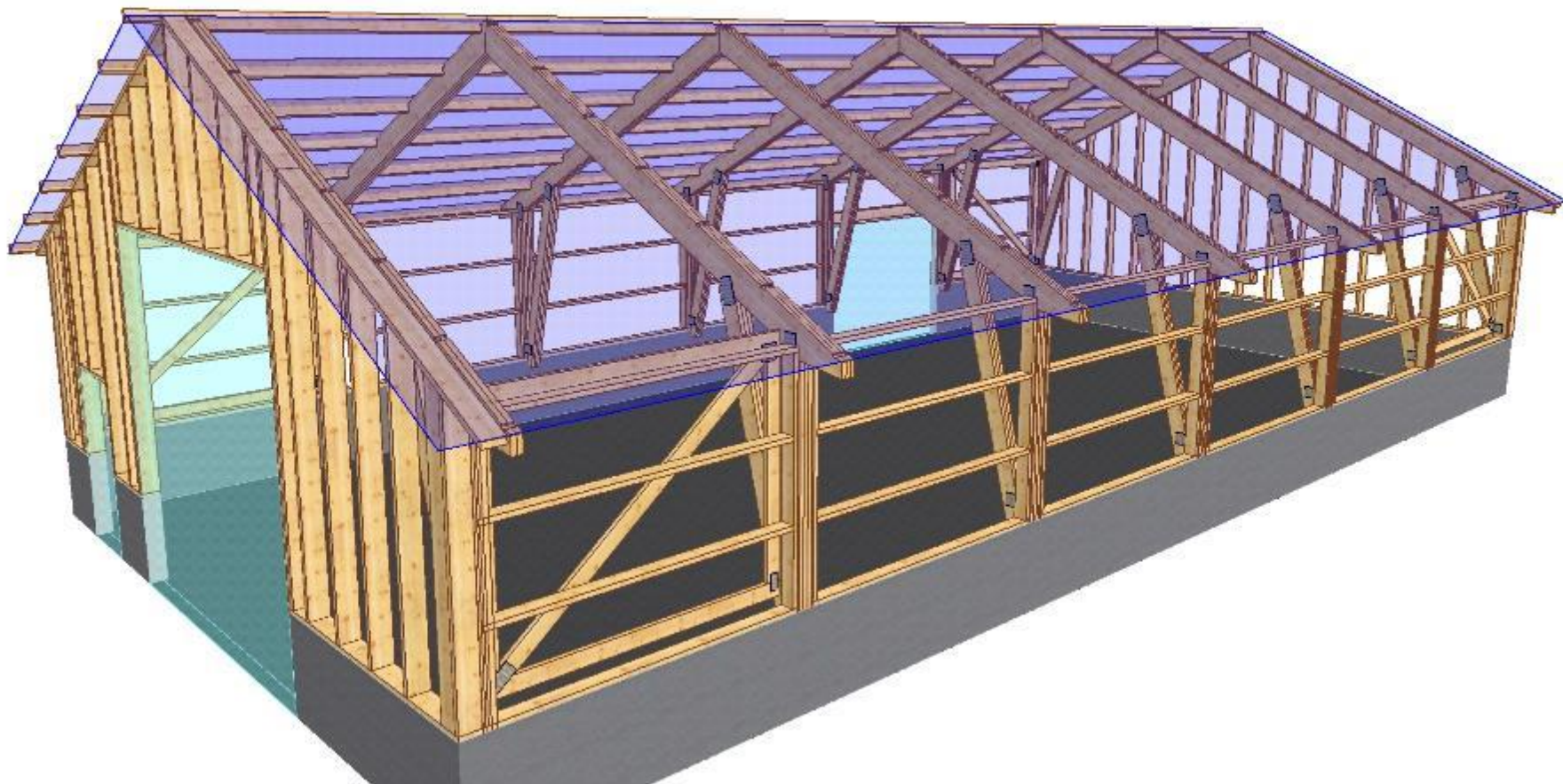


MONTERINGSVENNLIGE BYGG



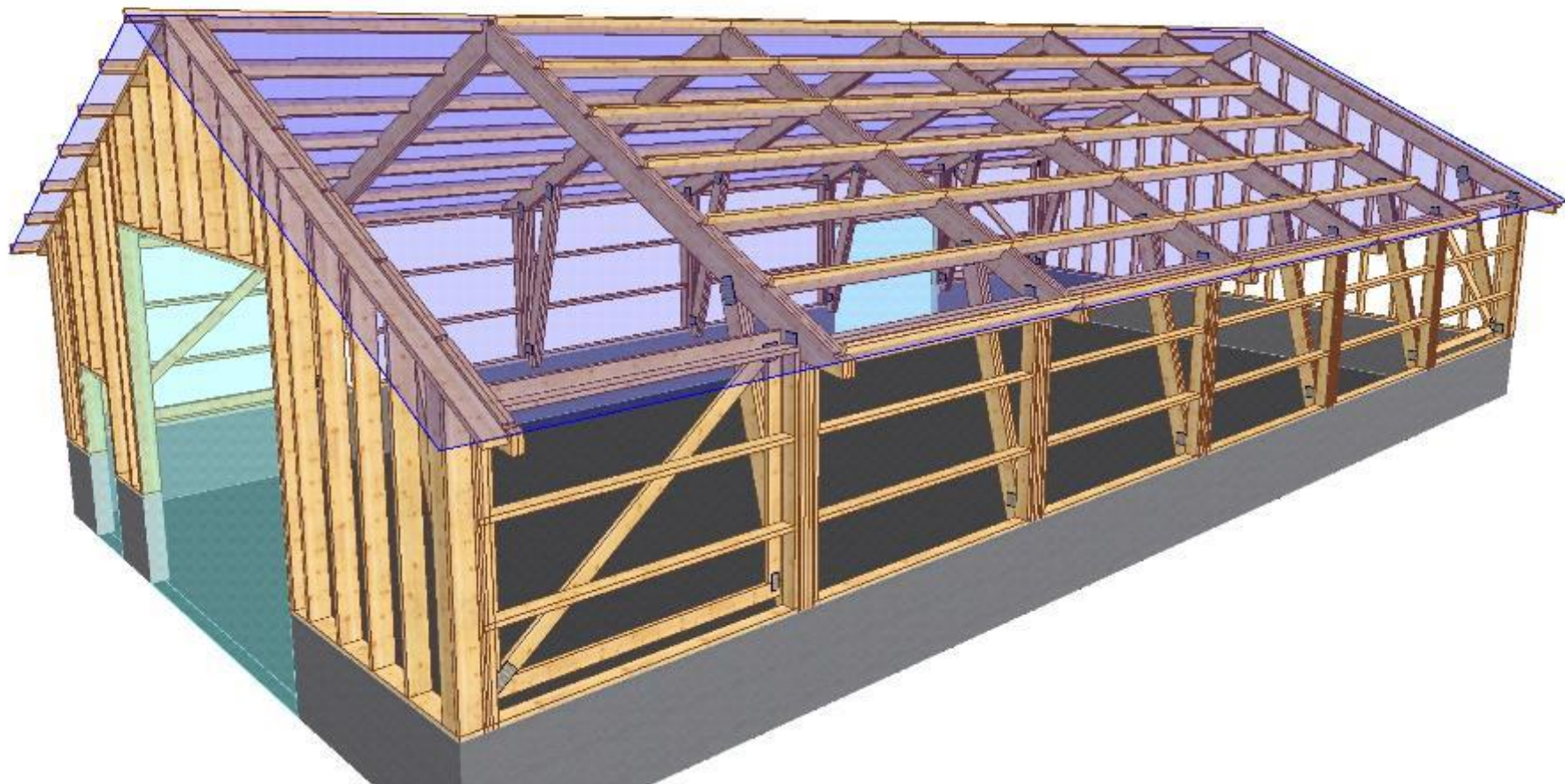


MONTERINGSVENNLIGE BYGG



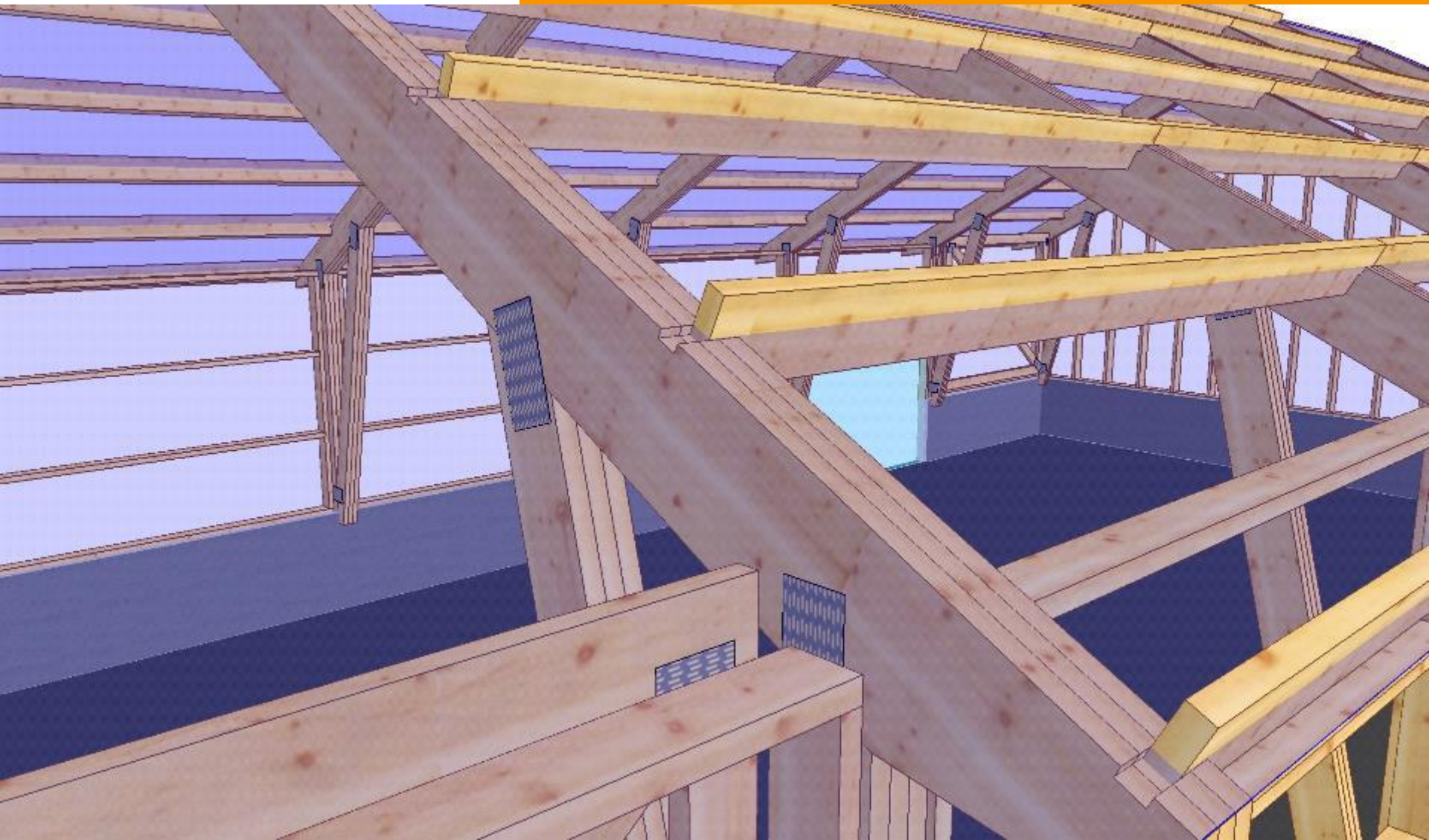


MONTERINGSVENNLIGE BYGG



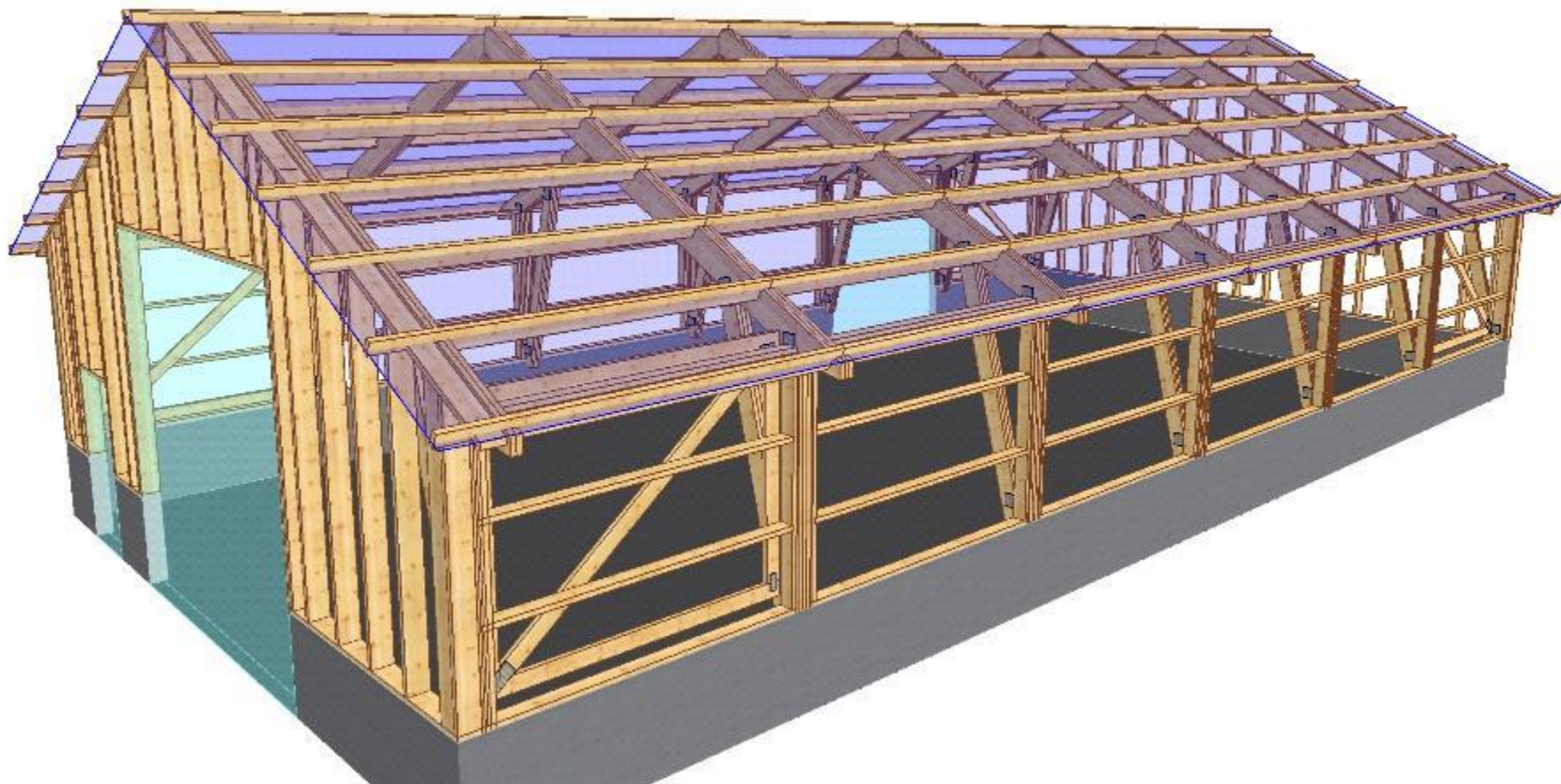
Jatak[®]

MONTERINGSVENNLIGE BYGG



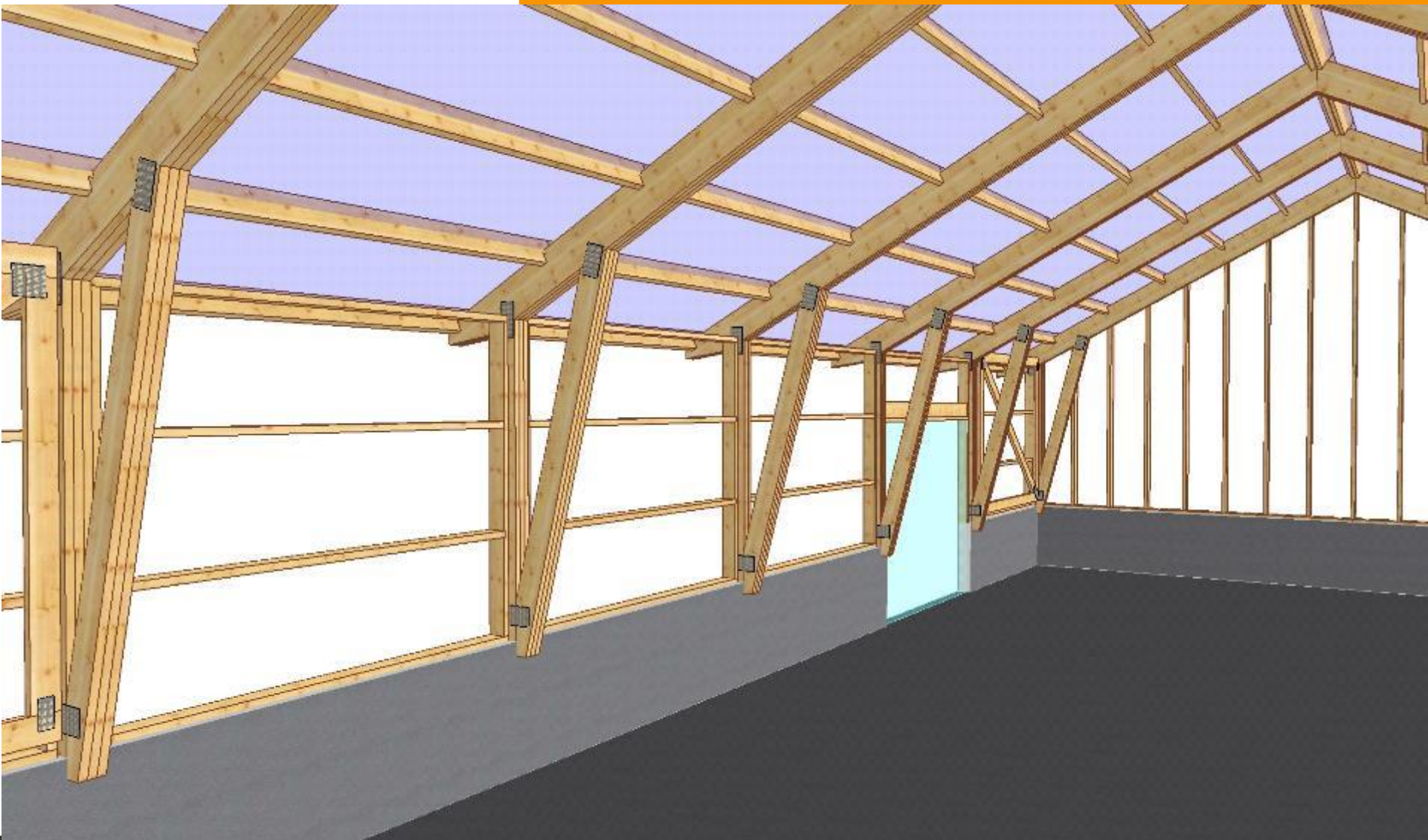
Jatak[®]

MONTERINGSVENNLIGE BYGG



Jatak[®]

MONTERINGSVENNLIGE BYGG



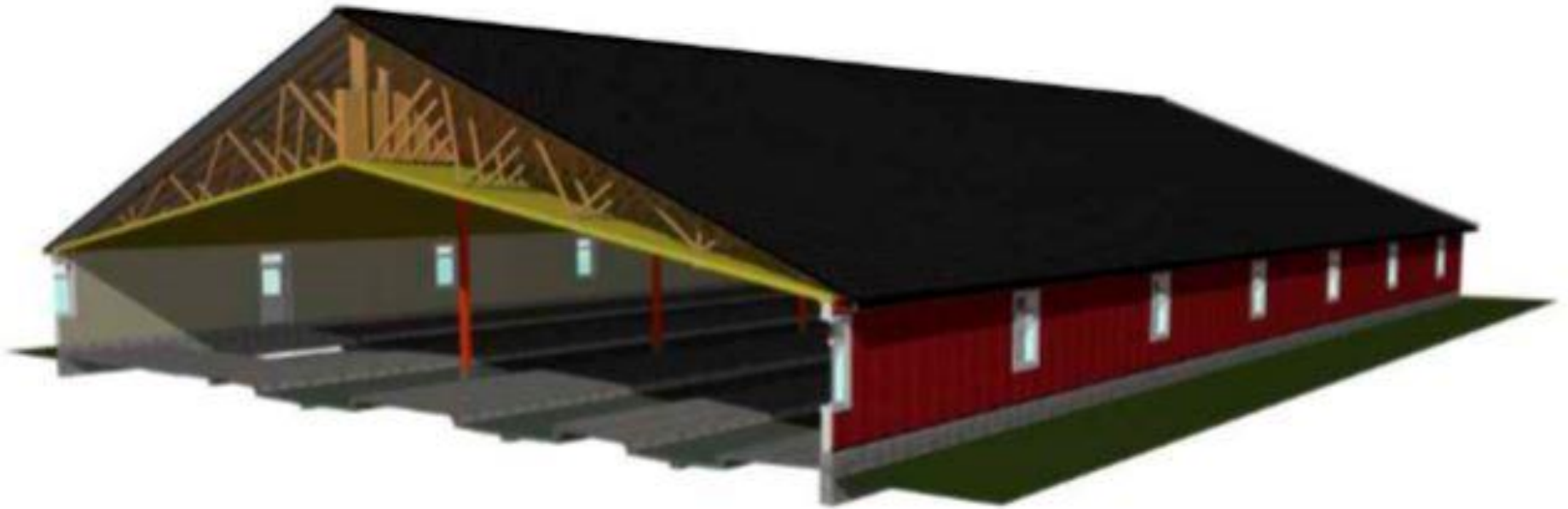


STORE SPENN



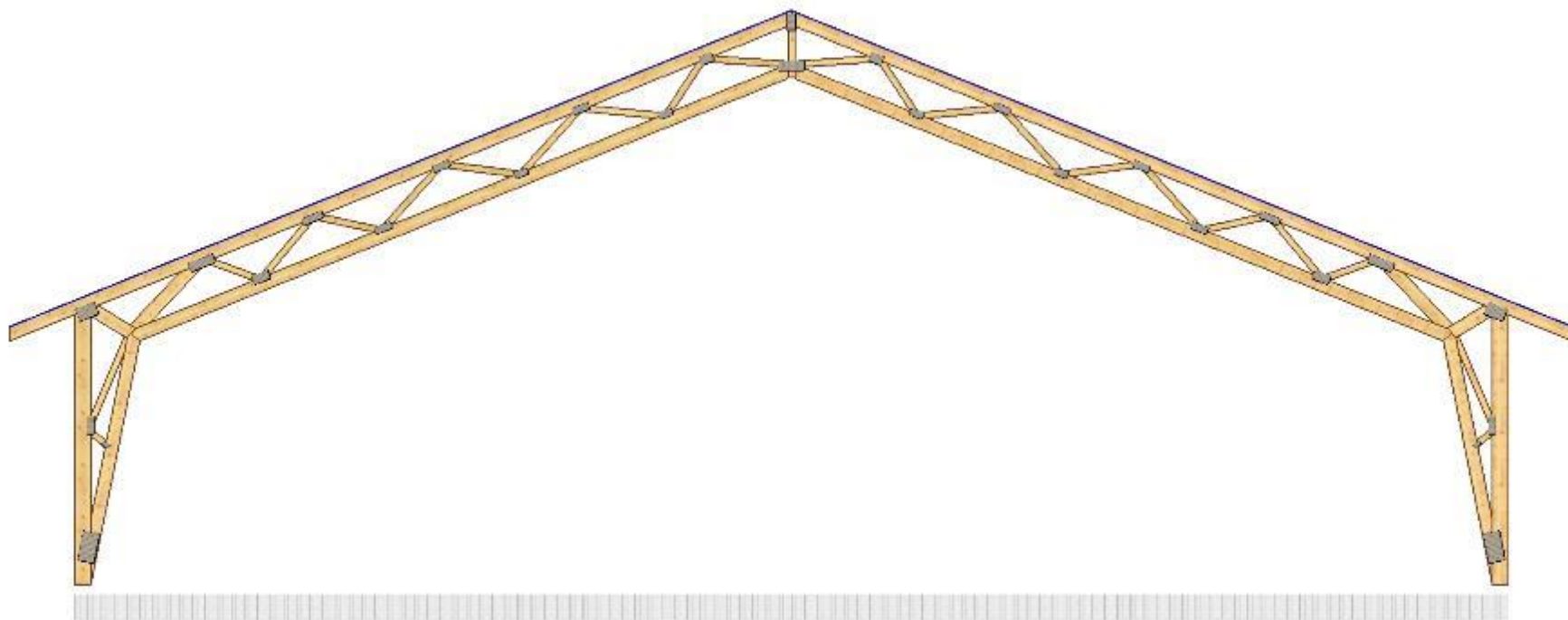
Jatak[®]

STORE SPENN



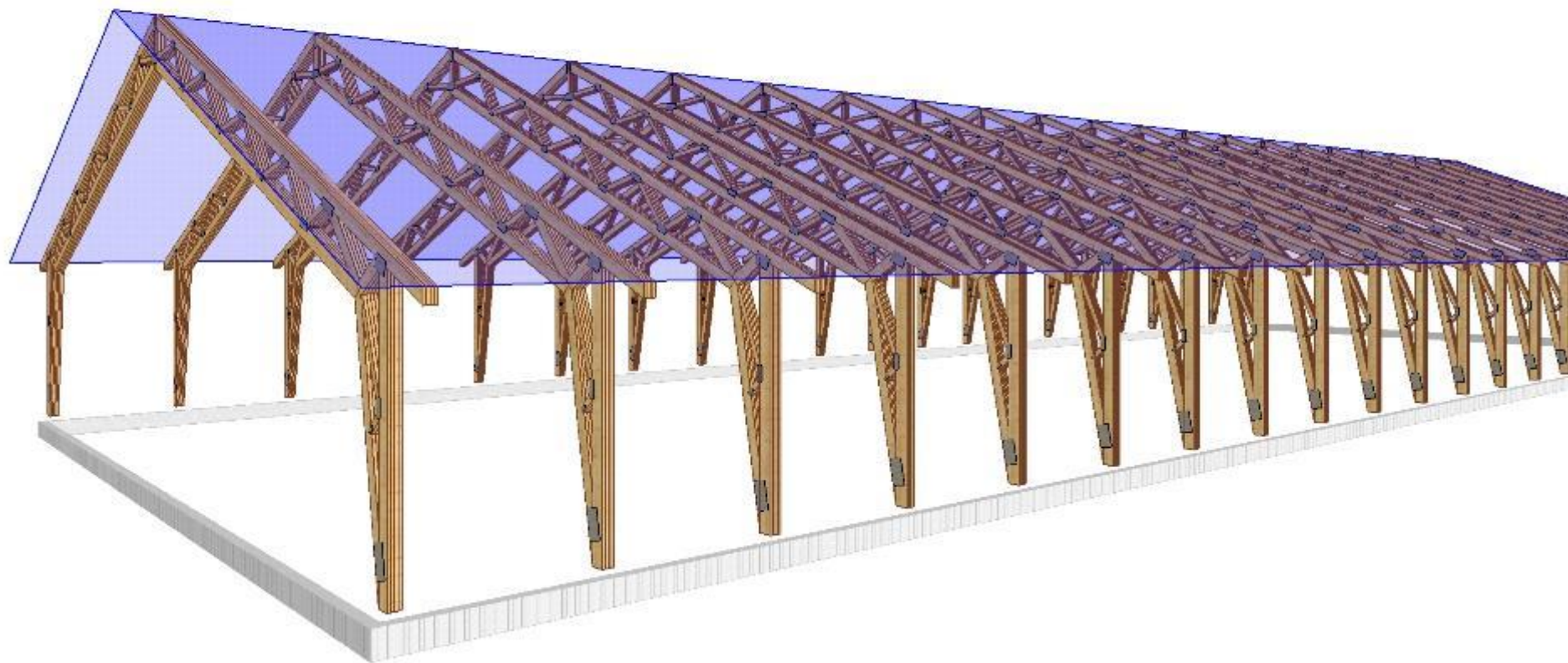
Jatak[®]

STORE SPENN



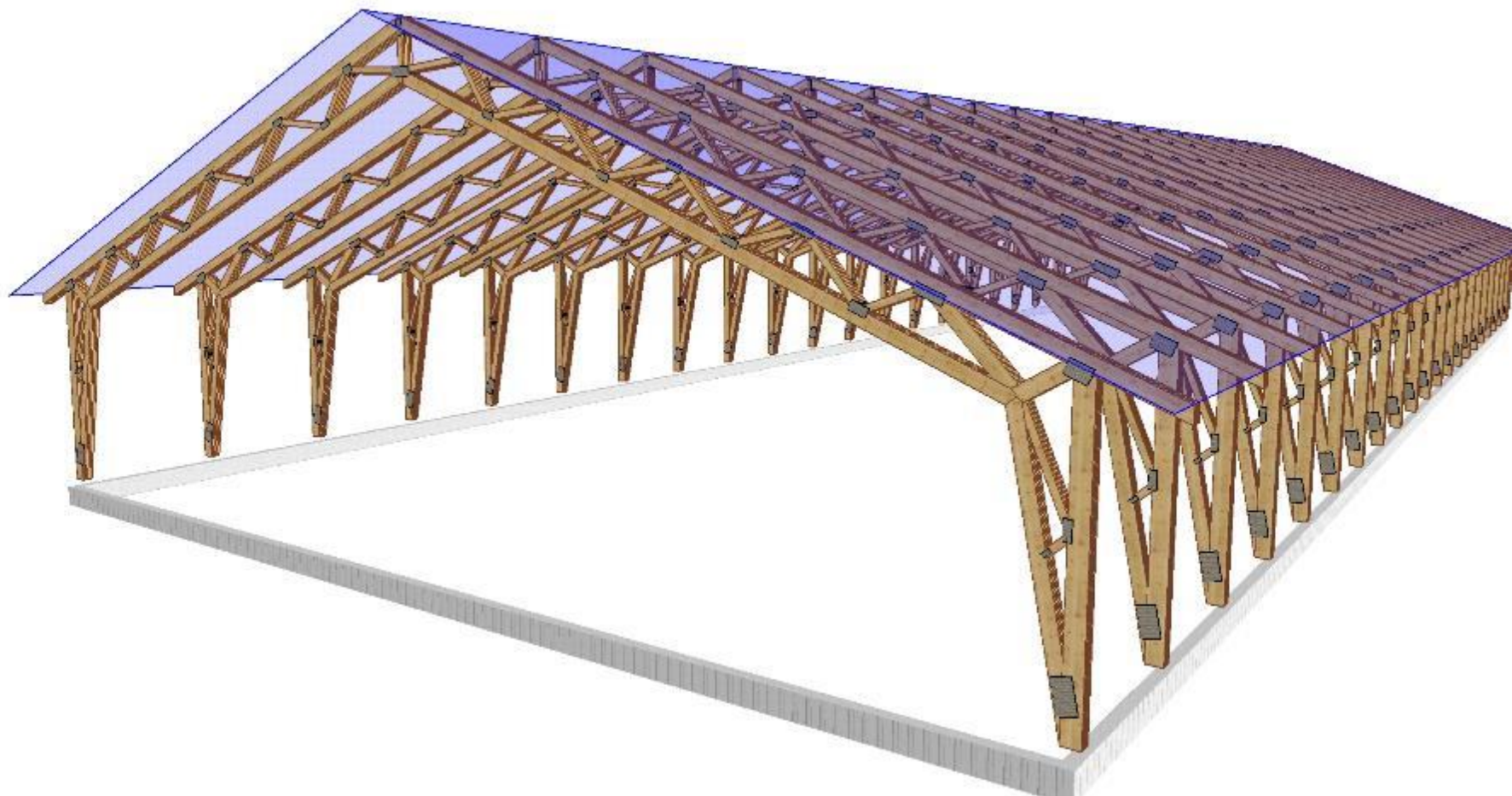
Jatak[®]


STORE SPENN



Jatak[®]

STORE SPENN



A vertical image strip on the left side of the slide. It shows a bright sun in a clear blue sky with a few white clouds. At the bottom, there is a dark silhouette of a person's head and shoulders, looking upwards.

Sammen med Jatak
Gruppen skaper vi
fremtidens
konstruksjonsløsninger
i tre!